



**US Army Corps  
of Engineers**  
Louisville District®

# Public Notice

---

Public Notice No.  
LRL-2014-00209-pgj

Open Date:  
19 Feb 2019

Close Date:  
21 Mar 2019

---

Inquiries:  
U.S. Army Corps of Engineers, Louisville District  
ATTN: Patricia Grace-Jarrett, Ph. D., CELRL-RDE, Rm 752  
P.O. Box 59-0059  
Louisville, Kentucky 40201-0059

Phone: 502-315-6687

---

This notice describes an application submitted for a Department of the Army (DA) Permit, subject to Section 404 of the Clean Water Act. The project is being considered for authorization in accordance with 33 CFR 325.2(b) (2) and the procedures outlined in the “Letter of Permission for New Mitigation Projects Associated with Approved Compensatory Mitigation Banking and In-Lieu Fee Instruments”, I.D. No. LRL-2010-323.

**SPONSOR:** The Kentucky Dept. of Fish and Wildlife Resources  
Stream and Wetland In-Lieu Fee Program  
#1 Sportsman’s Lane  
Frankfort, Kentucky 40601

**LOCATION:** On unnamed ephemeral and intermittent tributaries, Indian Creek (a perennial stream) and the Licking River (a traditionally navigable water, TNW), Bath County, Kentucky.

Latitude: 38.256937 N  
Longitude: -83.728106 W  
7.5 Minute Quad: Hillsboro

**PURPOSE:** To provide aquatic habitat re-establishment, rehabilitation, and preservation and riparian habitat enhancement.

**DESCRIPTION OF WORK:** The Big Farm Indian Creek Restoration Project would re-establish approximately 19,937 linear feet, rehabilitate approximately 13,588 linear feet, and preserve approximately 9,552 linear feet of ephemeral, intermittent and perennial streams and would enhance riparian habitat adjacent to approximately 5,998 linear feet of stream. The project would also enhance 1.2 acres of existing palustrine forested and palustrine emergent wetland and establish 23 acres of palustrine forested wetland. The project is within the Lower Licking River Watershed Service Area.

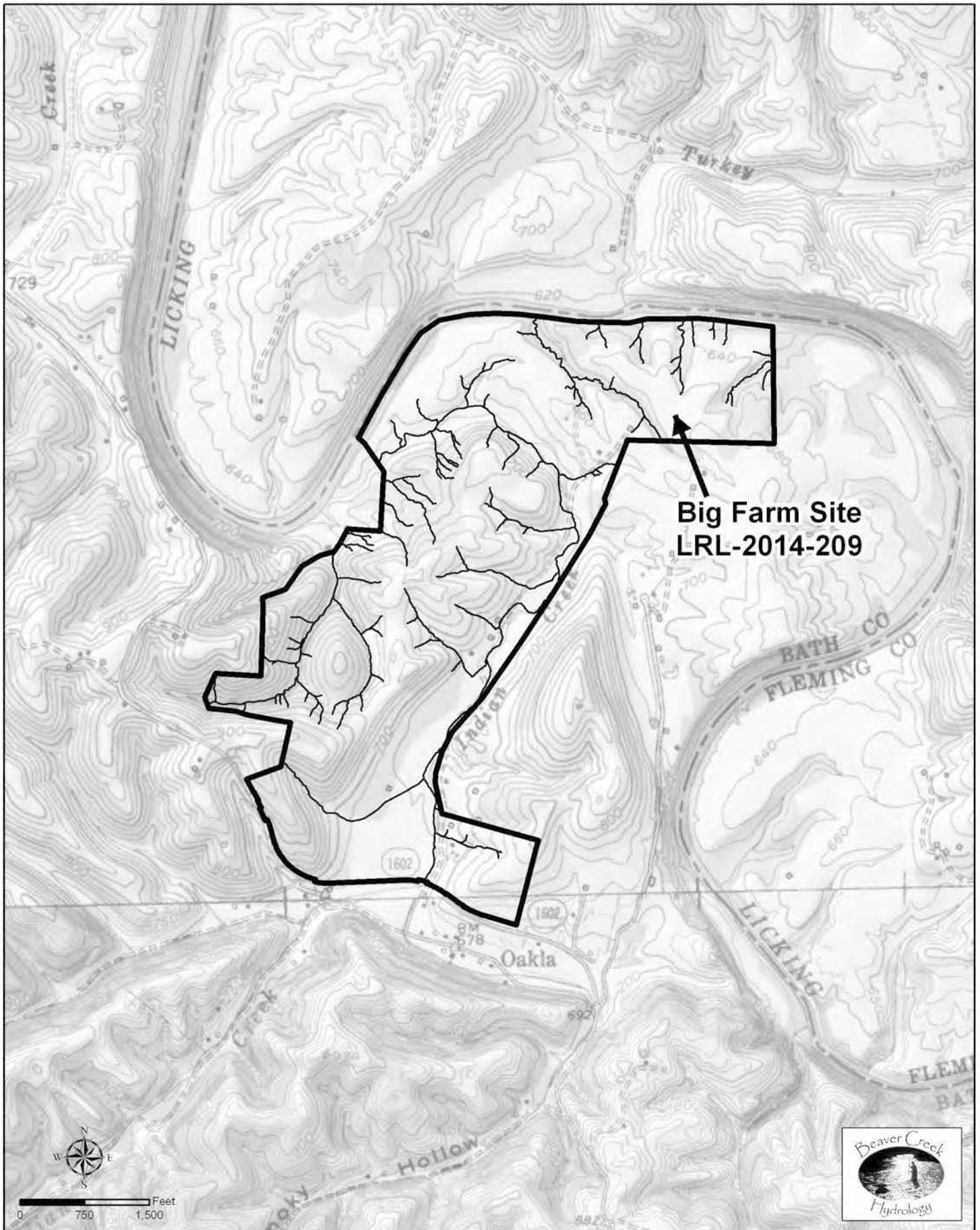
The wetlands abut unnamed ephemeral and intermittent streams. The unnamed ephemeral and intermittent streams are tributary to Indian Creek, a perennial stream, or to the Licking River, a TNW. Indian Creek is tributary to the Licking River.

The project would result in an estimated net gain of approximately 39,891 stream and 24.3 wetland Adjusted Mitigation Units (AMU). The project area, including a 150-foot buffer surrounding all streams, would be permanently protected through implementation of conservation deed restrictions on an approximately 467-acre site owned by the Sponsor.

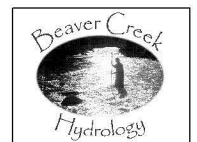
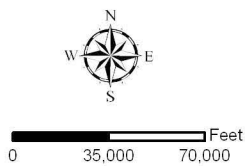
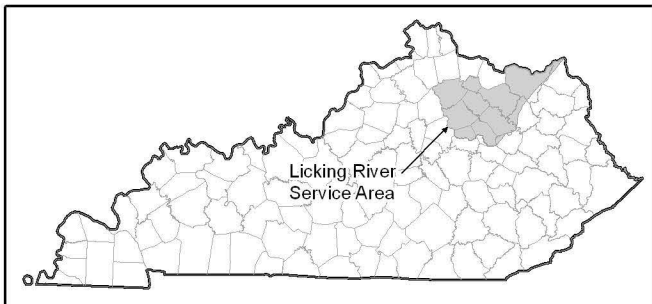
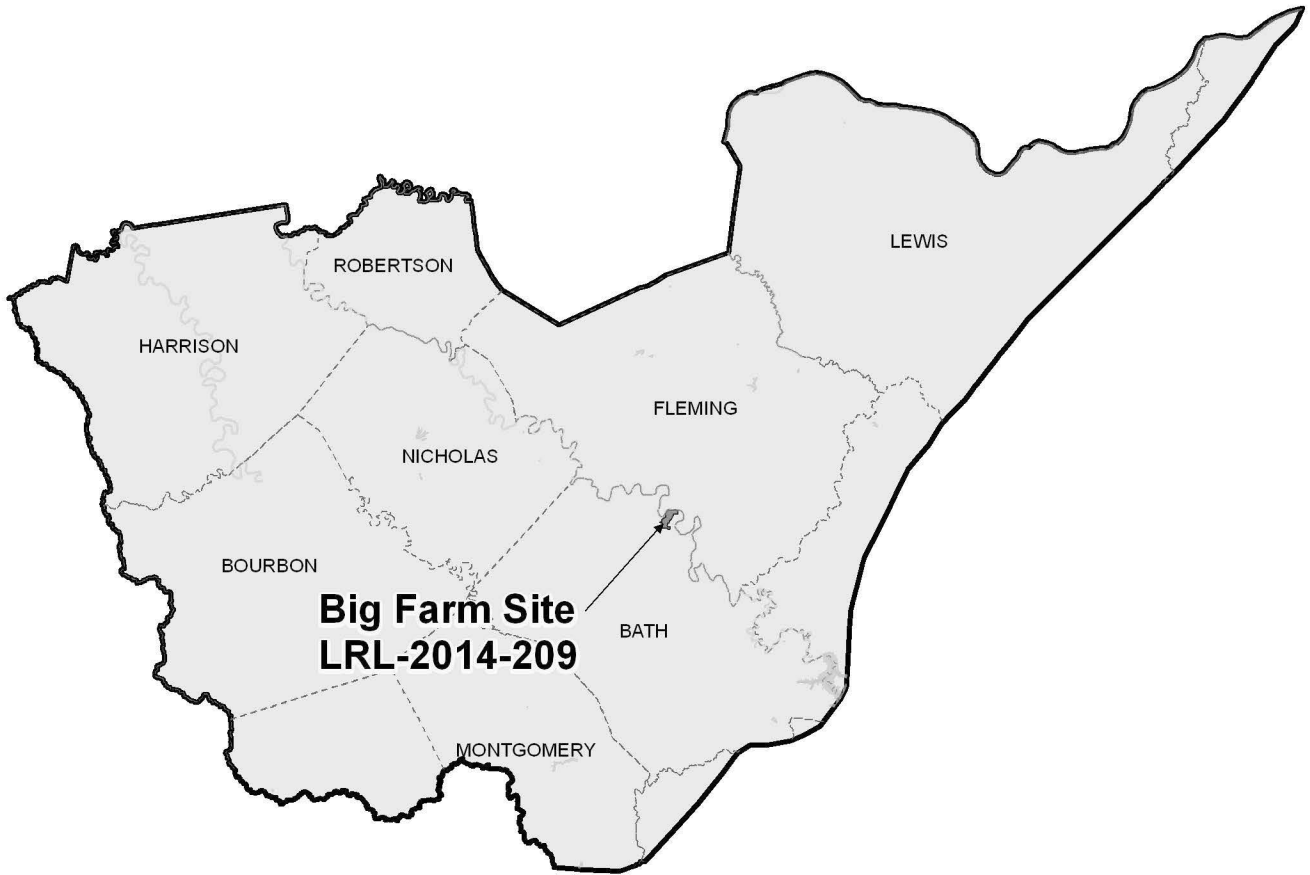
In a letter dated June 26, 2015, the Kentucky State Historic Preservation Officer concurred with the Corp's determination that the project, as proposed, would have "no adverse effect" to historic properties, contingent upon avoidance of two sites.

In a letter dated October 17, 2018, the U.S. Fish and Wildlife Service (USFWS) concurred with the Corps' determination that the project, as proposed, "may affect - not likely to adversely affect" the gray (*Myotis grisescens*), Indiana (*Myotis sodalis*), and northern long-eared (*Myotis septentrionalis*) bats, clubshell (*Pleurobema clava*), fanshell (*Cyprogenia stegaria*), rough pigtoe (*Pleurobema plenum*), northern riffleshell (*Epioblasma tortulosa rangiana*), snuffbox (*Epioblasma triquetra*), sheepsnose (*Plethobasus cyphus*), and pink mucket (*Lampsilis abrupta*) mussels, and running buffalo clover (*Trifolium stoloniferum*).

The Public Notice and drawings are available on Louisville District's Internet site at <http://www.lrl.usace.army.mil/Missions/Regulatory.aspx>.



**BIG FARM INDIAN CREEK  
STREAM MITIGATION SITE**



**BIG FARM INDAIN CREEK  
STREAM MITIGATION SITE**