



**US Army Corps
of Engineers**
Louisville District ®

Public Notice

Public Notice No.	Open Date:	Close Date:
LRL-2012-637-pgj	28 Jan 2016	29 Feb 2016

Inquiries:

U.S. Army Corps of Engineers, Louisville District
ATTN: Patricia Grace-Jarrett, Ph. D., CELRL-OPF-S, Rm 752
P.O. Box 59
Louisville, Kentucky 40201-0059

Phone: 502-315-6687

This notice describes an application submitted for a Department of the Army (DA) Permit, subject to Section 404 of the Clean Water Act. The project is being considered for authorization in accordance with 33 CFR 325.2(b)(2) and the procedures outlined in the "Letter of Permission for New Mitigation Projects Associated with Approved Compensatory Mitigation Banking and In-Lieu Fee Instruments", I.D. No. LRL-2010-323.

SPONSOR: The Kentucky Dept. of Fish and Wildlife Resources
Stream and Wetland In-Lieu Fee Program
#1 Sportsman's Lane
Frankfort, Kentucky 40601

LOCATION: On the Licking River, Coon and Cassidy Creeks,
and unnamed intermittent and ephemeral
tributaries to these waters, located on the Clay
Wildlife Management Area, in Nicholas County,
Kentucky.

Latitude: 38.35109 N
Longitude: -83.94201 W
7.5 Minute Quads: Moorfield

PURPOSE: To provide aquatic habitat enhancement,
rehabilitation, re-establishment, preservation
and riparian habitat enhancement activities.

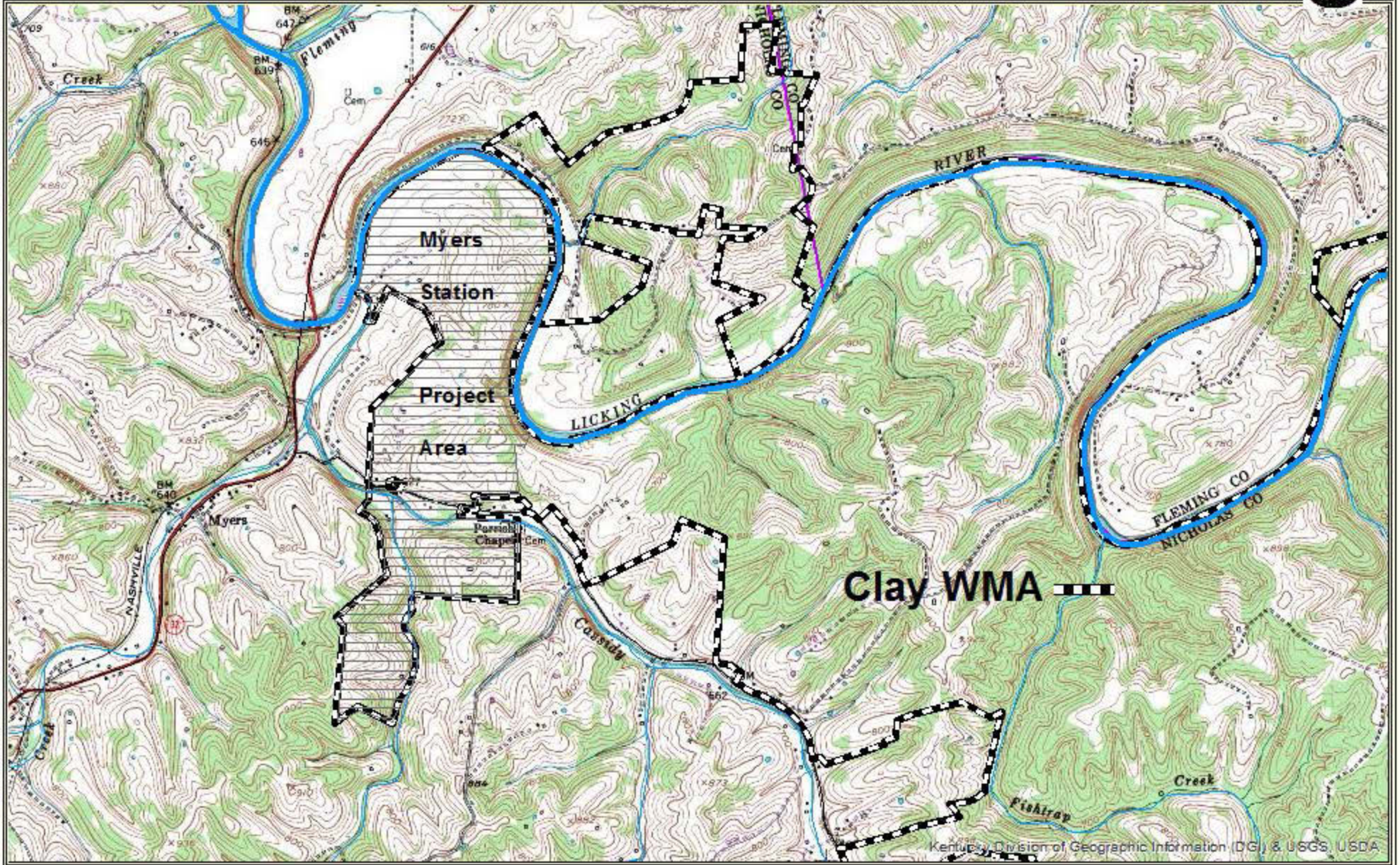
DESCRIPTION OF WORK: The Meyers Station Stream Restoration Project would enhance approximately 9,225 linear feet of riparian habitat along the Licking River, rehabilitate approximately 1,791 linear feet of Cassidy Creek, re-establish and rehabilitate approximately 2,062 linear feet of Coon Creek and re-establish, rehabilitate, preserve and enhance riparian habitat for approximately 12,616 linear feet of unnamed intermittent and ephemeral tributaries to Coon and Cassidy Creeks and to the Licking River. The project would result in an estimated net gain of 14,643 Adjusted Mitigation Units. The streams and a 50- to 150-foot riparian corridor would be permanently protected through implementation of conservation deed restrictions. The unnamed

Operations Division
Regulatory Branch (South)
Public Notice No. LRL-2012-634-pgj

tributaries flow to Coon and Cassidy Creeks or the Licking River. Coon Creek is a tributary of Cassidy Creek. Cassidy Creek is a tributary to the Licking River and the Licking River is a Traditionally Navigable Water (TNW).

The Public Notice and drawings are available on Louisville District's Internet site at: <http://www.lrl.usace.army.mil/Missions/Regulatory.aspx>.

Myers Station Stream Mitigation Project LRL-2012-637



Kentucky Division of Geographic Information (DG) & USGS, USDA



0 0.25 0.5 0.75 1 Miles