



US Army Corps
of Engineers
Louisville District

Notice to Navigation Interests

Notice No. 2019-073

Date: December 6, 2019

<http://www.lrl.usace.army.mil/Missions/CivilWorks/Navigation/Notices.aspx>

In Reply Refer to: CELRL-OPL PO Box 59, Louisville, KY 40201 Telephone: 502-315-6366

LOUISVILLE DISTRICT

OLMSTED LOCKS AND DAM

NAVIGATION LANE AND TOW SIZE

OHIO RIVER

REFERENCE: Navigation Notice #2019-066, dated October 8, 2019

Effective now until further notice, traffic will continue utilizing the navigation pass at Olmsted Locks and Dam (Ohio River Mile 964.6). The navigation lane will be 900 feet wide as marked by buoys; See References 1 and 2, attached. There are no marine construction activities at Olmsted in-progress at this time, and marine demolition activities at Locks and Dam 53 (Ohio River Mile 962.6) have been suspended for the high water season.

Effective 1200 CDT, 06 December 2019 until further notice, tow size/configuration is restricted as follows:

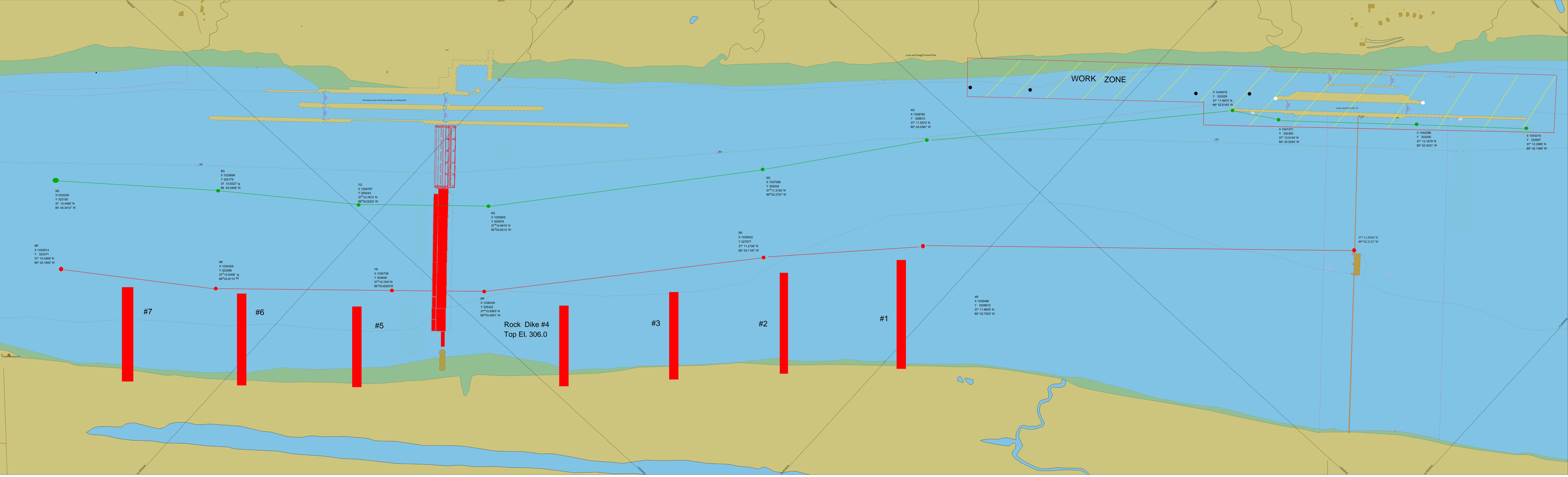
Down bound tow maximum dimensions are 175' x 1200' including towboat, with no more than 25 regulation barges and not to exceed 5 wide. No hip barges or other deviation that could degrade normal steerage characteristics are allowed for down bound tows.

Up bound tow maximum dimensions are 140' x 1600' including towboat, with no more than 28 regulation barges and not to exceed 4 wide. Up bound tows shall have adequate power to maintain an average speed of 3 miles per hour.

All mariners will take direction from the Olmsted Locks and Dam control tower.

/s/

Shawn Kenney, P.E.
Operations Manager
Locks and Dams Project Office



WORK ZONE

Chesapeake Lock and Dam (under construction)

Locks and Dam No. 53

Rock Dike #4
Top El. 306.0

#7

#6

#5

#3

#2

#1

9G
X 1032228
Y 323100
37° 10.4465' N
89° 04.3412' W

8G
X 1033699
Y 324179
37° 10.6327' N
89° 04.9458' W

7G
X 1034767
Y 325043
37° 10.7812' N
89° 03.8322' W

6G
X 1035825
Y 325979
37° 10.9415' N
89° 03.6212' W

5G
X 1037596
Y 328205
37° 11.3183' N
89° 03.2727' W

5R
X 1038322
Y 327577
37° 11.2190' N
89° 03.1187' W

9R
X 1032914
Y 322471
37° 10.3469' N
89° 04.1950' W

8R
X 1034326
Y 323386
37° 10.5058' N
89° 03.9110' W

7R
X 1035736
Y 324699
37° 10.7031' N
89° 03.6303' W

6R
X 1036439
Y 325322
37° 10.8363' N
89° 03.4901' W

4R
X 1039486
Y 3328610
37° 11.8629' N
89° 02.7923' W

4G
X 1038782
Y 329615
37° 11.5573' N
89° 03.0387' W

X 1040918
Y 332028
37° 11.9679' N
89° 02.6163' W

X 1041371
Y 332300
37° 12.0144' N
89° 02.5250' W

X 1042296
Y 333200
37° 12.1679' N
89° 02.3431' W

X 1043315
Y 333957
37° 12.2985' N
89° 02.1366' W

37° 11.9356' N
89° 02.2132' W

Channel Fairway & Buoys ~Master ~ Work Area

#	<u>Type</u>	<u>General Location</u>	<u>Easting X</u>	<u>Northing Y</u>	<u>θ Latitude (GPS)</u>	<u>λ Longitude (GPS)</u>	<u>Notes</u>
4G	Green	Up-Stream	1038782	329615	37° 11.5573' N	89° 03.0387' W	In Location
5G	Green	Lower-Up-Mid-Stream	1037596	328205	37° 11.3183' N	89° 03.2727' W	In Location
6G	Green	Upper-Mid-Stream	1035825	325979	37° 10.9415' N	89° 03.6212' W	In Location
7G	Green	Lower-Mid-Stream	1034767	325043	37° 10.7812' N	89° 03.8322' W	In Location
8G	Green	Down-Stream	1033699	324179	37° 10.6327' N	89° 04.0458' W	In Location
9G	Green	Down-Stream	1032380	323071	37° 10'4426.' N	89° 04.3093' W	In Location
	Green	53 upstream	1043315	333957	37° 12.2985' N	89° 02.1366' W	In Location
	Green	53 mid upstream	1042286	333200	37° 12.1679' N	89° 02.3431' W	In Location
	Green	53 mid downstream	1041371	332300	37° 12.0144' N	89° 02.5250' W	In Location
	Green	53 downstream	1040918	332028	37° 11.9670' N	89° 02.6163' W	In Location
4R	Red	Up-Stream	1039486	328810	37° 11.4288' N	89° 02.8880' W	In Location
5R	Red	Lower Up-Stream	1038322	327577	37° 11.2190' N	89° 03.1187' W	In Location
6R	Red	Upper Mid-Stream	1036439	325322	37° 10.8368' N	89° 03.4901' W	In Location
7R	Red	Lower Mid-Stream	1035736	324699	37° 10.7301' N	89° 03.6303' W	In Location
8R	Red	Down Stream	1034326	323386	37° 10.5058' N	89° 03.9110' W	In Location
9R	Red	Down Stream	1032914	322471	37° 10.3469' N	89° 04.1950' W	In Location
	Red	53 Beartraps			37° 11.9356' N	89° 02.2132' W	In Location