



# Phoenix USARC

## AZ010\_P0002





# BT Collins USARC

## CA062\_661



55.0 °F  
Partly Cloudy



AHU-01

CWS

HWS

Meters

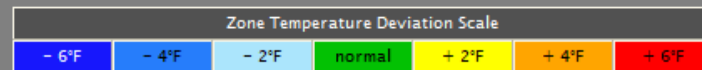
VAVs



# Phoenix USARC AZ010\_P0002



- 1st Floor NW
- 1st Floor NE
- 1st Floor S
- 2nd Floor W
- 2nd Floor E



AHU\_01

Serves VAVs

MO041\_GC460



Equipment

Configuration

### Discharge Status

dischargeTemp	55.4 °F
dischargeTempSp	55.0 °F
dischargePressure	2.06 in/wc
dischargePressureSp	2.13 in/wc
dischargeFlow	5955 cfm

### Discharge Fan

dischargeFan	On
dischargeFanStatus	On
dischargeFanSpeed	66 %

### Return Fan

returnFan	On
returnFanStatus	On
returnFanSpeed	66 %
returnTemp	70.1 °F

### Unit Status

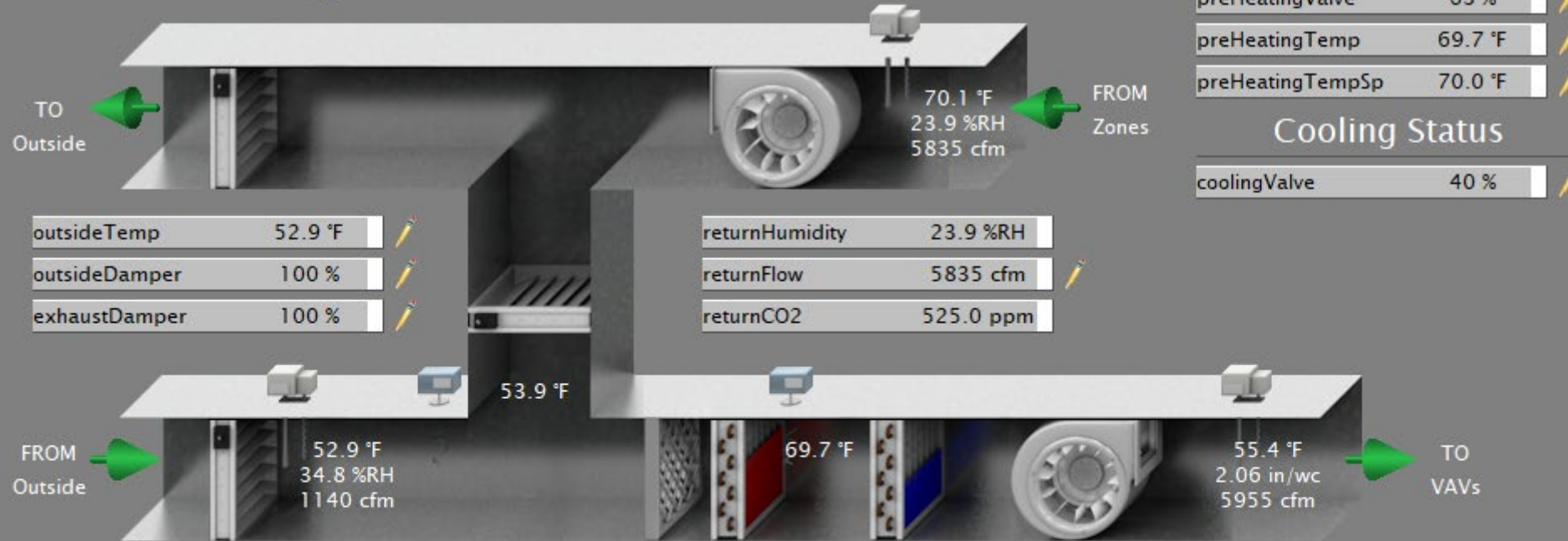
occupancyMode	Occupied
buildingPressure	0.00 in/wc
filterPressureDelta	0.30 in/wc

### Heating Status

preHeatingValve	63 %
preHeatingTemp	69.7 °F
preHeatingTempSp	70.0 °F

### Cooling Status

coolingValve	40 %
--------------	------







Overview

## VAV Overview

Unit Information				Zone Temperature			Heating	Return Fan		
Equip	Area Served	Occ	Mode	Temp	CoolSp	HeatSp	Valve	Damper	FlowSp	Flow
VAV-01	Classroom 129	Unoccupied	Cooling	68.30 °F	82.00 °F	62.00 °F	0.00 %	0.00 %	0.00 cfm	38.0
VAV-02	Classroom 132	Unoccupied	Heating	63.90 °F	80.00 °F	72.00 °F	100.00 %	0.00 %	0.00 cfm	48.0
VAV-03	Classroom 133	Unoccupied	Cooling	65.80 °F	82.00 °F	62.00 °F	0.00 %	85.37 %	530.00 cfm	527.0
VAV-04	Classroom 130	Unoccupied	Cooling	65.10 °F	75.00 °F	62.00 °F	0.00 %	0.00 %	0.00 cfm	42.0
VAV-05	Classroom 131	Unoccupied	Cooling	65.40 °F	75.00 °F	62.00 °F	0.00 %	0.00 %	0.00 cfm	30.0
VAV-06	Classroom 128	Unoccupied	Cooling	64.30 °F	78.00 °F	62.00 °F	0.00 %	0.00 %	0.00 cfm	36.0
VAV-07	Classroom 120	Unoccupied	Heating	65.20 °F	82.00 °F	72.00 °F	100.00 %	0.00 %	0.00 cfm	29.0
VAV-08	Classroom 121	Unoccupied	Cooling	65.90 °F	82.00 °F	62.00 °F	0.00 %	0.00 %	0.00 cfm	143.0
VAV-09	Classroom 119	Unoccupied	Cooling	63.10 °F	75.00 °F	62.00 °F	0.00 %	0.00 %	0.00 cfm	27.0
VAV-10	Classroom 118	Unoccupied	Cooling	65.70 °F	82.00 °F	62.00 °F	0.00 %	0.00 %	0.00 cfm	36.0
VAV-11		Unoccupied	Cooling	67.70 °F	75.00 °F	62.00 °F	0.00 %	20.11 %	0.00 cfm	9.0
VAV-12	Storage	Unoccupied	Heating	65.90 °F	80.00 °F	72.00 °F	100.00 %	0.00 %	N/A	36.0
VAV-13A	Classroom 117	Unoccupied	Cooling	64.50 °F	82.00 °F	62.00 °F	0.00 %	0.00 %	0.00 cfm	45.0
VAV-13B	Classroom 117	Unoccupied	Cooling	64.40 °F	82.00 °F	62.00 °F	0.00 %	0.00 %	0.00 cfm	46.0
VAV-14A	Classroom 138	Unoccupied	Cooling	65.00 °F	78.00 °F	62.00 °F	0.00 %	0.00 %	0.00 cfm	103.0
VAV-14B	Classroom 138	Unoccupied	Cooling	65.00 °F	78.00 °F	62.00 °F	0.00 %	0.00 %	0.00 cfm	44.0
VAV-15	Restrooms	Unoccupied	Cooling	64.90 °F	78.00 °F	62.00 °F	0.00 %	0.00 %	0.00 cfm	19.0
VAV-16	Office 107,108	Unoccupied	Heating	63.20 °F	78.00 °F	72.00 °F	0.00 %	0.00 %	0.00 cfm	12.0
VAV-17	Office 109,110	Unoccupied	N/A	64.90 °F	78.00 °F	62.00 °F	0.00 %	0.00 %	0.00 cfm	18.0
VAV-18	Comp Lab 112	Unoccupied	Cooling	66.00 °F	78.00 °F	62.00 °F	0.00 %	0.00 %	0.00 cfm	22.0
VAV-19	Lobby,105,106	Unoccupied	Cooling	65.70 °F	78.00 °F	62.00 °F	0.00 %	0.00 %	0.00 cfm	20.0
VAV-20	Office 111	Unoccupied	Heating	65.50 °F	80.00 °F	72.00 °F	100.00 %	0.00 %	0.00 cfm	60.0
VAV-21	Classroom 129	Unoccupied	Cooling	68.30 °F	75.00 °F	62.00 °F	0.00 %	0.00 %	0.00 cfm	41.0
VAV-22	Mech Room	Unoccupied	Cooling	68.40 °F	82.00 °F	62.00 °F	0.00 %	0.00 %	0.00 cfm	49.0

VAV-01

Classroom 129

CA062\_661



Equipment

VAV Overview

### Zone Status

zoneTemp	64.00 °F
zoneTempLocalSp	68.50
zoneTempBASSp	68.0
effectiveCoolSp	68.50 °F
effectiveHeatSp	62.50 °F

### Zone Setpoints

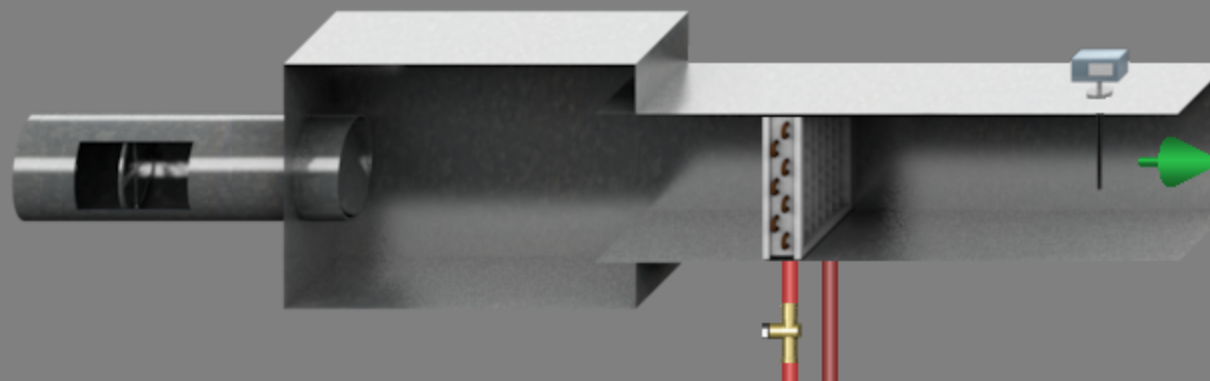
coolingOffsetSp	0.00 °F
heatingOffsetSp	6.00 °F
unoccupiedCoolSp	82.00 °F
unoccupiedHeatSp	62.00 °F

### Discharge Airflow

dischargeFlow	160.0
dischargeFlowSp	150.00 cfm
dischargeFlowMinSp	150.00 cfm
dischargeFlowMaxSp	500.00 cfm
dischargeFlowHeatMax	150.00 cfm

### System Status

occupancyRequest	Occupied
occupancyStatus	Occupied
occupancySensor	Off
hvacMode	Cooling
dischargeDamper	30.95 %
heatingValve	0.00 %
dischargeTemp	50.40 °F





Equipment

Boiler 01 Status

boiler01	Run
boiler01 LeavingTemp	119.00 °F
boiler01 Flow	Flow
boiler01 IsoValve	Open
boiler01 Alarm	Alarm
boiler01 AlarmReset	Off

Boiler 02 Status

boiler02	Run
boiler02 LeavingTemp	122.80 °F
boiler02 Flow	Flow
boiler02 IsoValve	Open
boiler02 Alarm	Alarm
boiler02 AlarmReset	Off

Pump 15 Status

secPump15	Run
secPump15Status	Running
secPump15Alarm	Normal
secPump15AlarmRese	Reset

Pump 16 Status

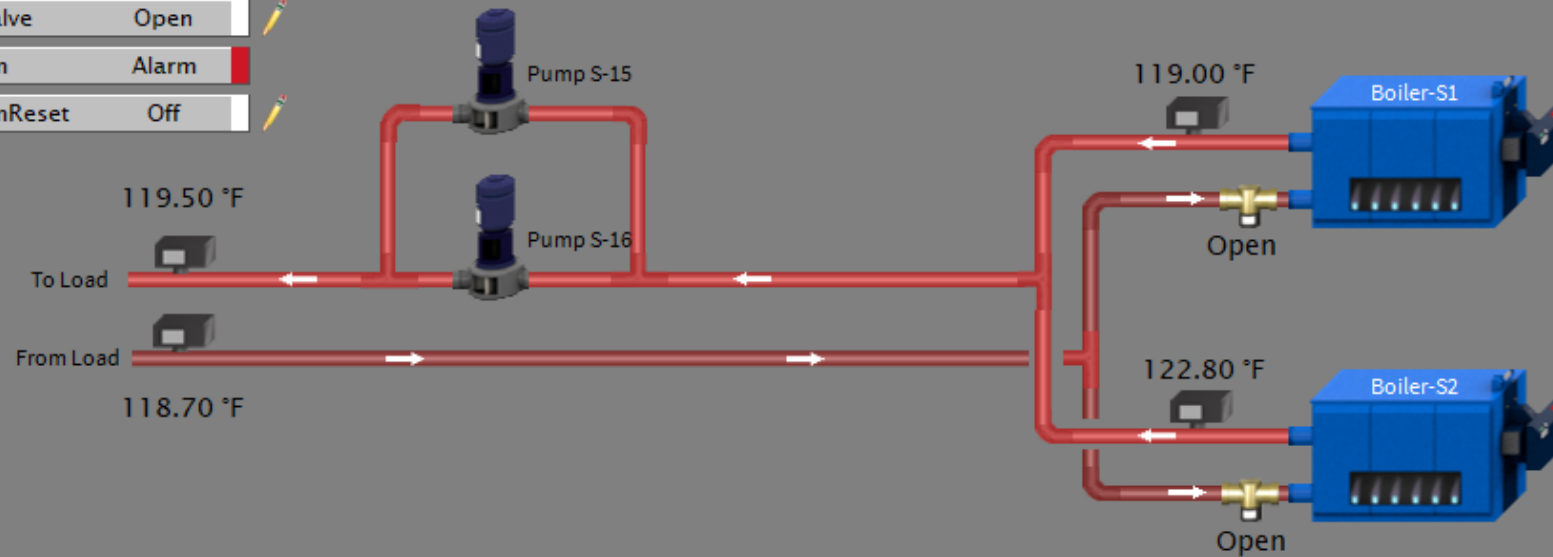
secPump16	Stop
secPump16Status	Running
secPump16Alarm	Normal
secPump16AlarmRese	Off

Enable Setpoints

boiler01 EnableSp	70.00 °F
boiler02 EnableSp	78.00 °F
secPumpEnableSp	140.00 °F
systemEnableSp	82.00 °F

System Status

secLeavingTemp	119.50 °F
secEnteringTemp	118.70 °F
outsideTemp	49.00 °F
systemEnable	On





Equipment

Chiller Status

chiller	Run
chillerIsoValve	Open
priLeavingTemp	232.50 °F
priEnteringTemp	146.50 °F

Pump 05 Status

priPump05	Run
priPump05Status	Stopped
priPump05Alarm	Normal
priPump05AlarmReset	Off

Pump 07 Status

secPump07	Run
secPump07Status	Running
secPump07Alarm	Normal
secPump07AlarmRese	Off

System Status

secLeavingTemp	311.10 °F
secEnteringTemp	80.80 °F
bypass	100.00 %
outsideTemp	51.0 °F
systemEnable	On
systemEnableSp	45.00 °F

Pump 06 Status

priPump06	Run
priPump06Status	Stopped
priPump06Alarm	Alarm
priPump06AlarmReset	Off

Pump 08 Status

secPump08	Stop
secPump08Status	Stopped
secPump08Alarm	Alarm
secPump08AlarmRese	Off

