

Army Reserve Standard Furniture Specifications
FPI / UNICOR Lead Vendor Projects

<https://www.unicor.gov/Product.aspx?iStore=UNI&idProduct=2999>

FPI / UNICOR Desk Units - Bravo






<https://www.unicor.gov/Category.aspx?idCategory=1434>

Tag	Item	Model #	Remarks
D1	Bravo U-shaped Desk Unit - 48" bridge overheads over credenza	See Typical	Provide finishes: metal, trim, laminate, tackboard, overhead storage. Keyed alike per desk unit.
D2	Bravo U-shaped Desk Unit - 48" bridge overheads over bridge	See Typical	Provide finishes: metal, trim, laminate, tackboard, overhead storage. Keyed alike per desk unit.
D3	Bravo U-shaped Desk Unit - 42" bridge overheads over credenza	See Typical	Provide finishes: metal, trim, laminate, tackboard, overhead storage. Keyed alike per desk unit.
D4	Bravo U-shaped Desk Unit - 42" bridge overheads over bridge	See Typical	Provide finishes: metal, trim, laminate, tackboard, overhead storage. Keyed alike per desk unit.
D5	Bravo L-shaped Desk Unit - 48" return overheads over desk	See Typical	Provide finishes: metal, trim, laminate, tackboard, overhead storage. Keyed alike per desk unit.
D6	Bravo L-shaped Desk Unit - 48" return overheads over 48" return	See Typical	Provide finishes: metal, trim, laminate, tackboard, overhead storage. Keyed alike per desk unit.

* For more desk unit layouts/ configurations see AR Furniture Typicals

FPI / UNICOR Systems Furniture - Classic XXI

Tag	Item	Model #	Remarks
P#	Classic XXI Panel System - # Pod Workstations	See Typical	Each panel cluster shall be tagged
WS#	Classic XXI Workstation - Full-Time	See Typical	Each workstation shall be tagged (keyed alike)
WS#	Classic XXI Workstation - Shared	See Typical	Each workstation shall be tagged (each pedestal keyed different)

Finish	Description/ Finish designation	Finish Photo
Metal	Light Tone - 32	
Trim	Light Tone - L	
	Sand - 28	
	Warm Gray - 33	
	Gray - 29	
	Black - 27	

[System Furniture Fabrics: See link for fabrics](#)
https://www.unicor.gov/publications/furniture/CATMF604_C.pdf

FPI / KI Benching - Connection Zone

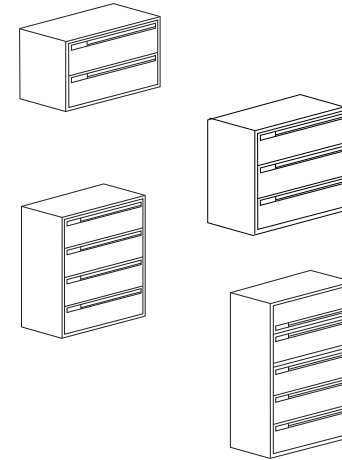
<https://www.ki.com/products/name/connection-zone-benching/#>

Tag	Item	Model #	Remarks
BE#	Benching Unit - shared or full-time	See Typical	Benching units shall be tagged based on typical size (#-person unit)(1) 2-drawer cushion top mobile pedestal per each shared benching unit. Screens between double-sided benching units if required. Below surface Lateral / bookshelf unit & screens per occupant if full-time

https://cf-store.widencdn.net/ki/e/6/1/e6173969-1cec-4444-91b9-44332e76ff6b.pdf?response-content-disposition=inline%3B%20filename%3D%22Connection-Zone-Collection-Price-List.pdf%22&Expires=1560794231&Signature=Slcn4pSeX2m~fbFqKU9NOH~NLVNXDF-d4SYMx3anL1VF2hjG3zXD8PTrwujsLgu1kPXt-xoadk9h6kmp9x1ejT4dxJKJmNpfLp4NPeHs0Q2RkWuGhpox14zN8pk-GV/fhdauHOxWMuV6Ogzvb3nSV-OkHMJpSp~JU9nRyjI0MSXITGtian~z7un3YXyR9TS23s1PXMe46r-jBy4rwyiw0mVt6G4rVXqGEM25cccsHWx0ky~oXxMafK8G~zr5RiMklsZ6doa8Uiv301R6NFUB7TFx-LHewkjQb6VD81x9~NI5r0mntDtiMZ7yKWmJz85~FdrRoo6ltieG6es7O64wACg__&Key-Pair-Id=APKAJD5XONOBVWVWOA65A

Lateral Files https://www.unicor.gov/publications/furniture/CATP662_C.pdf

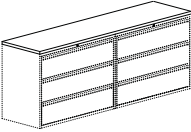
Tag	Item - Dimensions	Model #	Remarks
LF23	2H Lateral File - 30"W x 18"D x 27"H	LATFF230	2-drawer
LF2	2H Lateral File - 36"W x 18"D x 27"H	LATFF236	
LF24	2H Lateral File - 42"W x 18"D x 27"H	LATFF242	
LF33	3H Lateral File - 30"W x 18"D x 39 1/4"H	LATFF330	3-drawer
LF3	3H Lateral File - 36"W x 18"D x 39 1/4"H	LATFF336	
LF34	3H Lateral File - 42"W x 18"D x 39 1/4"H	LATFF342	
LF43	4H Lateral File - 30"W x 18"D x 51 1/2"H	LATFF430	4-drawer
LF4	4H Lateral File - 36"W x 18"D x 51 1/2"H	LATFF436	
LF44	4H Lateral File - 42"W x 18"D x 51 1/2"H	LATFF442	
LF53	5H Lateral File - 30"W x 18"D x 65 9/32"H	LATFF530	1-receding door / rollout shelf (top)
LF5	5H Lateral File - 36"W x 18"D x 65 9/32"H	LATFF536	4-drawers
LF54	5H Lateral File - 42"W x 18"D x 65 9/32"H	LATFF542	



Bookcases

Tag	Item - Dimensions	Model #	Remarks
BS23	2H Bookcase - 30"W x 15"D x 28-15/32"H	BC30151S	1 Shelf
BS2	2H Bookcase - 36"W x 15"D x 28-15/32"H	BC36151S	
BC2	2H Bookcase - 36"W x 18"D x 28-15/32"H	BC36181S	
BS33	3H Bookcase - 30"W x 15"D x 42-5/16"H	BC30152S	2 Shelves
BS3	3H Bookcase - 36"W x 15"D x 42-5/16"H	BC36152S	
BS43	4H Bookcase - 30"W x 15"D x 54-9/16"H	BC30153S	3 Shelves
BS4	4H Bookcase - 36"W x 15"D x 54-9/16"H	BC36153S	
BS53	5H Bookcase - 30"W x 15"D x 66-13/16"H	BC30154S	4 Shelves
BS5	5H Bookcase - 36"W x 15"D x 66-13/16"H	BC36154S	
BC5	5H Bookcase - 36"W x 18"D x 66-13/16"H	BC36184S	

Laminate Tops for Lateral Files https://www.unicor.gov/publications/furniture/CATMF603_C.pdf

		Dimensions			Model Number	Trim Color	Laminate
		W	D	H			
 <ul style="list-style-type: none"> Constructed of particle board between laminate and backer with vinyl molding around the perimeter of the surface. Specify laminate and trim color. 60" to 84" top to place on two or three adjacent files. Mounting hardware not included; recommend 2-sided tape or self-drilling screws. 	Fits one 30" wide lateral	30"	18"	1 1/4"	CIFFT1830	<input type="checkbox"/>	<input type="checkbox"/>
	Fits one 36" wide lateral	36"	18"	1 1/4"	CIFFT1836	<input type="checkbox"/>	<input type="checkbox"/>
	Fits one 42" wide lateral	42"	18"	1 1/4"	CIFFT1842	<input type="checkbox"/>	<input type="checkbox"/>
	Fits two 30" wide laterals	60"	18"	1 1/4"	CIFFT1860	<input type="checkbox"/>	<input type="checkbox"/>
	Fits one 30" & one 36" wide laterals	66"	18"	1 1/4"	CIFFT1866	<input type="checkbox"/>	<input type="checkbox"/>
	Fits two 36" or one 30" & one 42" laterals	72"	18"	1 1/4"	CIFFT1872	<input type="checkbox"/>	<input type="checkbox"/>
	Fits one 36" & one 42" wide laterals	78"	18"	1 1/4"	CIFFT1878	<input type="checkbox"/>	<input type="checkbox"/>
	Fits two 42" wide laterals	84"	18"	1 1/4"	CIFFT1884	<input type="checkbox"/>	<input type="checkbox"/>

Storage Cabinets w/ Shelves

Tag	Item	Model #	Remarks
SC23	2H Storage Cabinet - 30"W x 18"D	CIL-30240-HD	-
SC2	2H Storage Cabinet - 36"W x 18"D	CIL-36240-HD	-
SC24	2H Storage Cabinet - 42"W x 18"D	CIL-42240-HD	-
SC33	3H Storage Cabinet - 30"W x 18"D	CIL-30360-HD	-
SC3	3H Storage Cabinet - 36"W x 18"D	CIL-36360-HD	-
SC34	3H Storage Cabinet - 42"W x 18"D	CIL-42360-HD	-
SC53	5H Storage Cabinet - 30"W x 18"D	CIL-30615-HD	-
SC5	5H Storage Cabinet - 36"W x 18"D	CIL-36615-HD	-
SC54	5H Storage Cabinet - 42"W x 18"D	CIL-42615-HD	-

Wardrobe Cabinet

Tag	Item	Model #	Remarks
WC#	Wardrobe Cabinet - 30"W x 18"D	N/A	-
WC5	Wardrobe Cabinet - 36"W x 18"D x 65 9/32"H	CIL36615HXS w/ CIL-36CRS	-

Kiosk Cabinet

Tag	Item	Model #	Remarks
KL53	Kiosk Cab. w/ Drawers/Doors 30"W x 24"D x 65 9/32"H	KIOSK3024LHCL	Wardrobe on the left
KR53	Kiosk Cab. w/ Drawers/Doors 30"W x 24"D -//-	KIOSK3024RHCL	Wardrobe on the right
KL5	Kiosk Cab. w/ Drawers/Doors 36"W x 24"D -//-	KIOSK3624LHCL	Wardrobe on the left
KR5	Kiosk Cab. W Drawers/ Doors 36"W x 24"D -//-	KIOSK3624RHCL	Wardrobe on the right

Office Furniture Series per Rank System - MBI / Kimball

(model number shall be completed per the manufacture standard, refer to Vendor price list)

Footprint Series - Family Support & Retention Recruiting Offices

Tag	Item	Model #	Remarks
BF4	Footprint Bookcase	ABC3656-W-STD-??	Provide finish designation in model #
DF#	Footprint U-shaped Desk Unit - Provide Desk Pad	see Typical for tag designation	DOR to select: wood finish, metal finish, tackboard fabric, pulls - type/ finish
FF4	Fundamental 4H Lateral File	KSY16659020 (File KSY42337010 (Base)	DOR to select: wood finish, metal finish, pulls - type/ finish
TF42	Footprint Round Table - 42" dia.	SS42TTRNW-P-STD-?? (Top) AB32G-W-STD-?? (Base)	DOR to select wood finish Model number shall be completed per the manufacture standard - see Kimball price list
HR52	Vertical Storage (Hybrid Unit - Right)	12S2466VHHR2MW	-/-
HL52	Vertical Storage (Hybrid Unit - Left)	12S2466VHHL2MW	

Transcend Series - 06 Command Office

Tag	Item	Model #	Remarks
BT4	Transcend Bookcase	15K3652BCOF-STD-??	Provide finish designation in model #
DC#	Transcend U-Shaped Desk Unit - Provide Desk Pad	see Typical for tag designation	DOR to select: wood finish, tackboard fabric, pulls - type/ finish
FT4	Transcend 4H Lateral File	15K2437LFF4W-W-??-KSB - STD-?? CCS42RD-LW-2F-X-STD-?-STD-? (Top)	DOR to select: wood finish, pulls - type/ finish
TT42	Transcend Round Table - 42" dia	CBS2716CYW-STD-? (Base)	DORL to select wood finish

Senator Series - 07 Command Office

Tag	Item	Model #	Remarks
BB4	Senator Bookcase	SN1538CPCF-STD - ?? (Cornice) SN2439WSS - STD - ?? (Base) SN3648BCO - STD - ?? (Bookcase)	Provide finish designation in model #
DB#	Senator Desk Unit - Provide Desk Pad	see Typical for tag designation	DOR to select: wood finish, tackboard fabric, pulls - type/ finish
FB4	Senator 4H Lateral File	SN2439LFF\$-W-??-KSB-STD-??	DOR to select: wood finish, pulls - type/ finish

President Series - 08 Command Office

Tag	Item	Model #	Remarks
BX4	President Bookcase	PR1539CPTW-STD-?? (Cornice) KCG21792020-W-STD-?? (Bookcase) PR1537CPB-STD-?? (Base)	Provide finish designation in model # DOR to select: wood finish, pulls - type/ finish
DM#	President Desk Unit - No Desk Pad required (leather in-lay top)	see Typical for tag designation	DOR to select: wood finish, tackboard fabric, pulls - type/ finish
FX4	President 4H Lateral File	PR2439LFF4W-28AB-KSB-STD-??	DOR to select: wood finish, pulls - type/ finish
WX4	President Wardrobe	TD3680VHHW-26AB-STD-??	DOR to select: wood finish, pulls - type/ finish

MBI / Smith McDonald

Desk Pad

Provide as listed above

Tag	Item	Model #	Remarks
DP1	Desk Pad (Black)	470001-TB	Shall be specified for upgraded wood desk units only - Footprint, Transcend, Senator

Seating - MBI / Kimball

Wood Office & Conference Room Seating *

Tag	Item	Model #	Remarks
CH#	Clairmont HB Desk Chair - 07 & 08 Command Office	20-2633V-?-?-STD-??-B75-C44	Model # to include UPH grade, UPH # and finish designation - NO COM
CH#	Stature HB Desk Chair - 06, Fam. Supp & CNF. room	K11AA-?-?-STD-??4610-?-?-STD-??	Wood Arms and Wood Base - complete model# as above
CH#	Collage Guest Chair - w/ wood top	4605-?-?-STD-??	Use in offices
CH#	Collage Guest Chair - w/ UPH. top	4605-?-?-STD-??	https://www.kimball.com/getattachment/c4d73952-1990-4a85-8f46-2c6c5a0f5cd7/Clairmont_011619.pdf https://www.kimball.com/getattachment/2647506e-26b9-4b82-8eef-826ed8f0a20a/Stature_030819.pdf https://www.kimball.com/getattachment/df0eb76b-d5bc-4075-a861-42ae4f72a2cf/Collage_030819.pdf

Lobby Seating *

Tag	Item	Model #	Remarks
CH#	Enjoy Lounge Chair - 34Dx39Wx34H	K431A-??-??-STD-??	Model # to include UPH grade, UPH # and finish designation - no COM
CH#	Enjoy 2-Seat Sofa - 34Dx64Wx34H	K432A-??-??-??-STD-??	- https://www.kimball.com/furniture/seating/enjoy/
CH#	Enjoy 3-Seat Sofa - 34Dx79Wx34H	K433A-??-??-??-STD-??	-
CH#	Collage Bench - 24.5Dx50Wx32H	4642-?-??-STD-??	-
CH#	Villa Bench - 29Dx48Wx18-3/4H	K60RB-?-??-STD-??	-
CH#	Arpeggio Rolled Back - 26Dx26Wx32.5Hx	ARP-GC4A-?-??-STD-??	https://www.kimball.com/furniture/seating/arpeggio/

Alternate Training Rm / Conference Chair

Tag	Item	Model #	Remarks
CH#	Flip Nesting Chair w/ Caster - K76CMUC	see manufacture price list for specs https://www.kimball.com/furniture/seating/flip/	- Arms, Casters, Mesh Back combo (preferred by the ARIMD customer) for more options, fabric grade and how to build a model number please refer to the manufacture price list https://www.kimball.com/furniture/seating/flip/



- Fabric shall be selected from Grade 2-6 or M2-M6, NO COM
Fabric options: <https://www.kimball.com/materials/#>
"Graded-in" Upholstery can be specified - "Pre-approved" COM's cannot be specified.

Miscellaneous Product- MBI / Kimball

For large conference tables refer to Kimball website or contact Kimball rep.

Tag	Item	Model #	Remarks
OT#	Arpeggio End Table - 20x20x20	ARP-2020-STD-??	-
OT#	Arpeggio Corner Table - 28x28x20	ARP-2828-STD-??	-
OT#	Arpeggio Magazine Table - 24x42x15	ARP-2442-STD-??	-
CR#	President Buffet Credenza - 23.5Dx74.5Wx35H	KCG41132030-X-X-STD-??	Specify for Command Suite Conference Room only
LE#	Floor Lectern - 23.5Dx24Wx46H	TD2347LCW-28AB-STD-??	Specify for Command Suite Conference Room only

Kimball Wood & Laminate Finishes

<https://www.kimball.com/materials/standard-offering/#COLL=7951&MATTYPE=215,216&Laminate=217,218>

* [Kimball Surface Materials](#)

Kimball Textiles

<https://www.kimball.com/materials/standard-offering/#COLL=7951&MATTYPE=210>

Kimball Graded in Seating fabrics (no "pre-approved COM" to be used)

<https://www.kimball.com/materials/graded-in-seating-fabrics/>

TABLES

KI Product Selection - (FPI / KI)

VERIFY STYLE AND DIMENSION PER TAG AS SPECIFIED BY AE FIRM

Tables* - Classrooms, Break Rooms etc.

*Model # shall be completed per the manufacturer's standard, refer to KI price list - <https://p.widencdn.net/zrvtpu/Contract-Tables-Price-List>

Finishes - <https://www.ki.com/furniture-design-resources/literature-and-sample/finish-cards-and-samples/>

Tag	Item	Model #	Remarks
T26	Trek Fixed Leg 1 1/4" Top Table - 24x60x29	T25F2460-74P	Varies per project needs - additional size available, DOR to follow tagging system - contact Louisville District for additional guidance if necessary
T27	Trek Fixed Leg 1 1/4" Top Table - 24x72x29	T26F2472-74P	
T36	Trek Fixed Leg 1 1/4" Top Table - 30x60x29	T255F3060-74P	
T37	Trek Fixed Leg 1 1/4" Top Table - 30x72x29	T256F3072-74P	
TFT26	Trek Flip-Top 1 1/4" Top - 24x60x29	T25FT2460-74P	Classroom application, Laminate end panel option shall NOT be used
TFT27	Trek Flip-Top 1 1/4" Top - 24x72x29	T26FT2472-74P	
TFT36	Trek Flip-Top 1 1/4" Top - 30x60x29	T255FT3060-74P	
TFT37	Trek Flip-Top 1 1/4" Top - 30x72x29	T256FT3072-74P	
TP26	Trek Folding Leg 1 1/4" Top w/ PowerUp - 24x60x29	TD25ST/12460-74P	Varies per project needs; however, one classroom shall be set up w/ powered tables it is the DOR responsibility to verify with client
TP27	Trek Folding Leg 1 1/4" Top w PowerUp - 24x72x29	TD26ST/12472-74P	
TP36	Trek Folding Leg 1 1/4" Top w/ PowerUp - 30x60x29	TD255ST/13060/1-74P	
TP37	Trek Folding Leg 1 1/4" Top w. PowerUp - 30x72x29	TD256ST/13072-74P	
TS36	Barron Fixed Leg Square Table - 36x36x29	BS3FX-74P	Appropriate for Break Room due to space limitations
TS42	Barron Fixed Leg Square Table - 42x42x29	BS35FX-74P	
TR36	Barron Fixed Leg Round Table - 36" dia.	BR3FX-74P	
TR42	Barron Fixed Leg Round Table - 42" dia.	BR35FX-74P	

Uniframe Tables w/ Perfect Edge - Assembly

<https://p.widencdn.net/stkkek/Folding-Tables-Price-List>

* Tables w/o seating standard but user has choice between table with or without attached bench seating - user shall be educated of all pros and cons to either choice, NO additional chairs will be provided w/ bench seating.

Tag	Item	Model #	Remarks
TA9	Uniframe without Seating - 29x96x29	UFRT08/PR/BL-29	Black Base
TA10	Uniframe without Seating - 29x120x29	UFRT10/PR/BL-29	Black Base
TA12	Uniframe without Seating - 29x139x29	UFRT12/PR/BL-29	Black Base
TA9	Uniframe without Seating - 29x96x29	UFRT08/PR/CH-29	Chrome Base
TA10	Uniframe without Seating - 29x120x29	UFRT10/PR/CH-29	Chrome Base
TA12	Uniframe without Seating - 29x139x29	UFRT12/PR/CH-29	Chrome Base
TB9	Uniframe with Seating - 56x96x29	UF08BE/PR/BL-29	Black Base
TB10	Uniframe with Seating - 56x120x29	UF10BE/PR/BL-29	Black Base
TB12	Uniframe with Seating - 56x139x29	UF12BE/PR/BL-29	Black Base
TB9	Uniframe with Seating - 56x96x29	UF08BE/PR/CH-29	Chrome Base
TB10	Uniframe with Seating - 56x120x29	UF10BE/PR/CH-29	Chrome Base
TB12	Uniframe with Seating - 56x139x29	UF12BE/PR/CH-29	Chrome Base

Meeting Room Tables - Enlite

* model number shall be completed per the manufacture standard- <https://p.widencdn.net/zrvtpu/Contract-Tables-Price-List>

Tag	Item	Model #	Remarks
TM36	Enlite Fixed Leg 1 1/4" Top Boat Shaped Table - 36x60x24	ETBT3660-74P	Varies per project needs
TM37	Enlite Fixed Leg 1 1/4" Top Boat Shaped Table - 36x72x24	ETBT3672-74P	
TM42	Enlite Fixed Leg 1 1/4" Top Boat Shaped Table - 42x72x24	ETBT4272-74P	

KI Product Selection- continued

InTandem Tables - SIPRNET Learning Center

Tables shall be specified and tagged per table run, Louisville District will complete model number. DOR is responsible for appropriate tagging system and finish designation, including privacy screens.
Provide Surge Protector for each table top

Tag	Item	Model #	Remarks
LC#	InTandem Table - run of specified # of tables	by Louisville District	for Learning Center
SN#	InTandem Table - run of specified # of tables	by Louisville District	for SIPRNET

Specify laminates (worksurface & screens), edge trim color (worksurfaces), and paint color* (beams & legs)

Finishes - <https://www.ki.com/furniture-design-resources/literature-and-sample/finish-cards-and-samples/>

* In Tandem table beam color available only in:

- Black (BL)
- Blue Grey (GR)
- Warm Grey (WG)
- Sand (SA)
- Starlight Silver (SX)

Occasional Tables

Tag	Item	Model #	Remarks
OT#	Affina Square Table - 24x24x22	9706	Specify Laminate Top - apply to all occasional tables
OT#	Affina Rectangular Table - 24x42x16	9707	Specify Base finish
			-
OT#	Flex Rectangular End - 23x19.5x22H	5513	-
OT#	Flex Square Table - 24x24x22H	5521	-
OT#	Flex Rectangular Table - 19.5x40x18H	5514	-
OT#	Flex Round Table - 24" dia. x 18H	5515	-
OT#	Flex Rd Coffee Table - 36" dia x 18H	5517	-

Wood Tables - Kimball, or equal

Lobby, Conference, Offices

For large conference tables refer to Kimball website or contact Kimball rep.

Tag	Item	Remarks
OT#	Arpeggio End Table - 20x20x20	Arpeggio - Specify Rim profile - apply to all occasional tables. Veneer wood top available in Cherry finish only.
OT#	Arpeggio Corner Table - 28x28x20	
OT#	Arpeggio Magazine Table - 24x42x15	
CR#	President Buffet Credenza - 23.5Dx74.5Wx35H	
LE#	Floor Lectern - 23.5Dx24Wx46H	



Radius - Rim A



Beveled - Rim B

Kimball Surface Materials

- * Kimball Wood & Laminate Finishes
<https://www.kimball.com/materials/standard-offering/#COLL=7951&MATTYPE=215,216&Laminate=217,218>

Accessories provided by FPI / UNICOR

Monitor Arm

Tag	Item	Model #	Remarks
MA1	Single Monitor Arm/ Bolt Thru Mount (Silver) Mounting Plate Attachment - Bravo & Kimball surfaces	MF21S1B12 HSPLATE (specify)	This tag/model # (especially mounting plate) shall be used with UNICOR Bravo desking (include HSPLATE)
MA2	Single Monitor Arm/ 2-piece clamp (Silver) Standard Clamp attachment - Benching & Systems surfaces	MF21S1C12	This tag/model # shall be used with Adj Ht Table Desks, Benching & Systems worksurfaces.
MA21	Double Monitor Arm/ Bolt Thru Mount (Silver) Mounting plate attachment	MF22S1B12 HSPLATE (specify)	This tag/model # (especially mounting plate) shall be used on desking w/ grommets (include HSPLATE)
MA22	Double Monitor Arm/ 2- Piece Clamp (Silver) Standard Clamp attachment	MF22S1C12	This tag/model # shall be used with Adj Ht Table Desks, Benching & Systems worksurfaces.



MA1 - installed in grommet opening



Installed in drilled opening



MA2 - Clamp mount

***CPU Dolly**

Tag	Item	Model #	Remarks
CA1	CPU Dolly	CPUDLY	* Use by special request only

FPI / UNICOR TASK SEATING / OFFICE GUEST SEATING

World Task Chair Options

World Sled Base Guest Chair

World Chair Frame Color Options



Black – B
W11B



White – W
W11W



Gray – V
W11V



Silver w/ Gray trim
W03V



Black w/ Black trim
W03B

★ STANDARD TYPICAL CHAIR PER FRAME COLOR

How to Build - World Task & Sled Base Chair Product Code

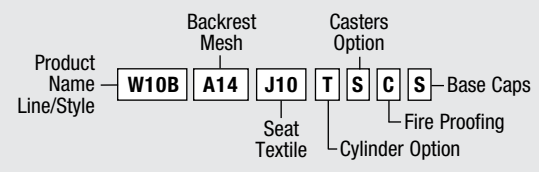
PART NUMBER	BACK/SEAT TEXTILE OPTIONS		OTHER OPTIONS			
LINE/STYLE	BACKREST MESH STYLE/COLOR	SEAT MESH/TEXTILE STYLE/COLOR	CYLINDER	CASTERS	FIRE PROOFING	BASE CAPS
W10B = World Task Chair, Armless, Black Frame W10V = World Task Chair, Armless, Gray Frame W10W = World Task Chair, Armless, White Frame W16B = World Task Chair, Fixed Duron Arms, Black Frame W16V = World Task Chair, Fixed Duron Arms, Gray Frame W16W = World Task Chair, Fixed Duron Arms, White Frame	<ul style="list-style-type: none"> • Monofilament Stripe M10 = Black M11 = Carbon M14 = Platinum M41 = Green M51 = Atlantic M81 = Amber • Silver Check C12 = Alloy C32 = Topaz 	<ul style="list-style-type: none"> • Pinstripe (Mesh) N01 = White N02 = Silver N03 = Graphite N10 = Black N34 = Cadimium N43 = Citron N58 = Cyan N74 = Crimson • Dash (Mesh) A14 = Platinum A19 = Zinc • Catena (Mesh) J10 = Black J1A = Poppy Seed J1B = Caraway J35 = Bayberry J50 = Cornflower 	S = 5" (Standard)	H = Hard Casters (Standard)	X = None - Plastics & Foams (Standard)	S = Matching Caps (Standard) (Brushed Stainless Steel Standard on White Frame)
<ul style="list-style-type: none"> ★ W11B = World Task Chair, Adjustable Duron Arms, Black Frame ★ W11V = World Task Chair, Adjustable Duron Arms, Gray Frame ★ W11W = World Task Chair, Adjustable Duron Arms, White Frame ★ W03B = World Sled Base Chair, B -Black frame w/ Black trim ★ W03V = World Sled Base Chair, V-Silver Frame w/ Gray Trim 	<ul style="list-style-type: none"> • Dash A14 = Platinum A19 = Zinc • Pinstripe N01 = White N02 = Silver N03 = Graphite N10 = Black N34 = Cadimium N43 = Citron N58 = Cyan N74 = Crimson 	<ul style="list-style-type: none"> • Dash (Mesh) A14 = Platinum A19 = Zinc • Catena (Mesh) J10 = Black J1A = Poppy Seed J1B = Caraway J35 = Bayberry J50 = Cornflower 	T = Tall 5" F = High 8" w/18" foot ring	S = Soft Casters	C = Fire Retardant CAL-133 Approved Plastics & Foams	H = Brushed Stainless Steel Caps on Black or Gray Base
W17B = World Task Chair, Fixed Duron Arms With Textile, Black Frame W17V = World Task Chair, Fixed Duron Arms With Textile, Gray Frame W17W = World Task Chair, Fixed Duron Arms With Textile, White Frame W12B = World Task Chair, Adjustable Duron Arms With Textile Black Frame W12V = World Task Chair, Adjustable Duron Arms With Textile, Gray Frame W12W = World Task Chair, Adjustable Duron Arms With Textile, White Frame	<ul style="list-style-type: none"> • Catena J10 = Black J1A = Poppy Seed J1B = Caraway J35 = Bayberry J50 = Cornflower 	<p style="text-align: center;">OR</p> <p style="text-align: center;">Select Optional Seat Textile from Grade #1 or #2 (listed on next page)</p>				

Note:
 Specify hard casters for soft surface floors (carpet)
 Specify soft casters for hard surface floors (rubber, concrete, etc.)
 Separate chair tag required per caster type.

- Base Part Number
- Standard
- Options (additional charge)

TO ORDER:
 Select the Part Number and add options from matrix above. The last 4 digits do not apply to the World Sled Base Occasional Chair.

For example, to order a World Task Chair, Armless, Black Frame (W10B), with Backrest Mesh Style in Dash/Platinum (A14), Seat Mesh/Textile Style in Catena/Black (J10), with Tall 5" Cylinder (T), Soft Casters (S), Fire Proofing (C) and Matching Base Caps (S), specify:



World Task & Sled Base Chair • Optional Seat Textile Choices



GRADE #1

- | | | |
|------------------------------|--------------------------|------------------------------|
| CF10 = Corde 4 (Black) | K101 = Lotus (Black) | FT16 = Fourtis (Ash) |
| CF12 = Corde 4 (Graphite) | K128 = Lotus (White) | FT12 = Fourtis (Granite) |
| CF57 = Corde 4 (Navy) | K158 = Lotus (Shale) | FT56 = Fourtis (Nimbus) |
| CF21 = Corde 4 (Dark Brown) | K182 = Lotus (Hematite) | FT44 = Fourtis (Alaria) |
| CF52 = Corde 4 (Thalo) | K2C4 = Lotus (Umber) | FT49 = Fourtis (Clover) |
| CF56 = Corde 4 (Medium Gray) | K281 = Lotus (Walnut) | FT68 = Fourtis (Hyacinth) |
| CF58 = Corde 4 (Azure) | K302 = Lotus (Ochre) | FT57 = Fourtis (Navy) |
| CF78 = Corde 4 (Parma Red) | K459 = Lotus (Verdant) | FT78 = Fourtis (Winterberry) |
| CF86 = Corde 4 (Pumpkin) | K507 = Lotus (Navy) | FT63 = Fourtis (Boysenberry) |
| | K603 = Lotus (Plum) | FT10 = Fourtis (Black) |
| | K608 = Lotus (Crocus) | |
| | K624 = Lotus (Eggplant) | |
| | K757 = Lotus (Earth Red) | |
| | K758 = Lotus (Lucky Red) | |

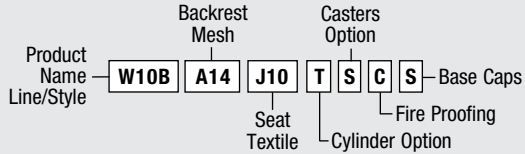
GRADE #2

- F101 = Ginkgo (Black)
- F197 = Ginkgo (Charcoal)
- F281 = Ginkgo (Walnut)
- F315 = Ginkgo (Wheat)
- F463 = Ginkgo (Green)
- F507 = Ginkgo (Navy)
- F556 = Ginkgo (Storm)
- F568 = Ginkgo (Horizon)
- F816 = Ginkgo (Harvest Orange)

TO ORDER:

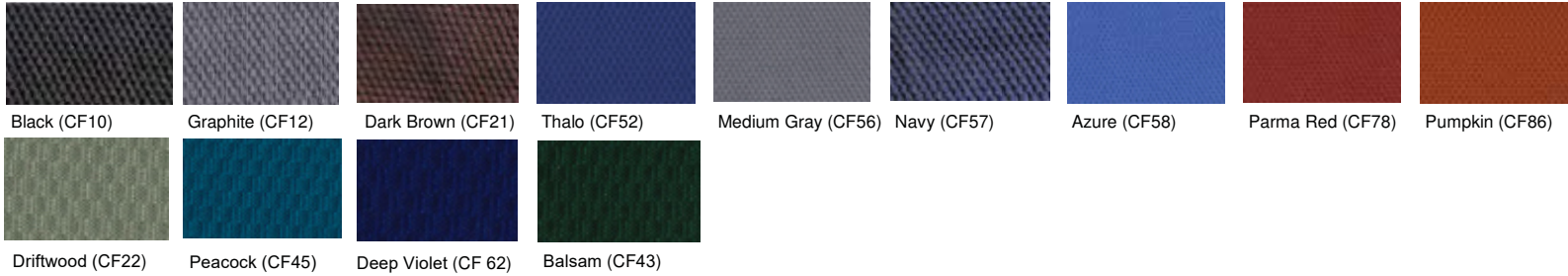
Select the Part Number and add options from matrix above on previous page.
The last 4 digits do not apply to the World Sled Base Occasional Chair.

For example, to order a World Task Chair, Armless, Black Frame (W10B), with Backrest Mesh Style in Dash/Platinum (A14), Seat Mesh/Textile Style in Catena/Black (J10), with Tall 5" Cylinder (T), Soft Casters (S), Fire Proofing (C) and Matching Base Caps (S), specify:



World Chair Upholstery Options

Corde 4 Textile Grade 1



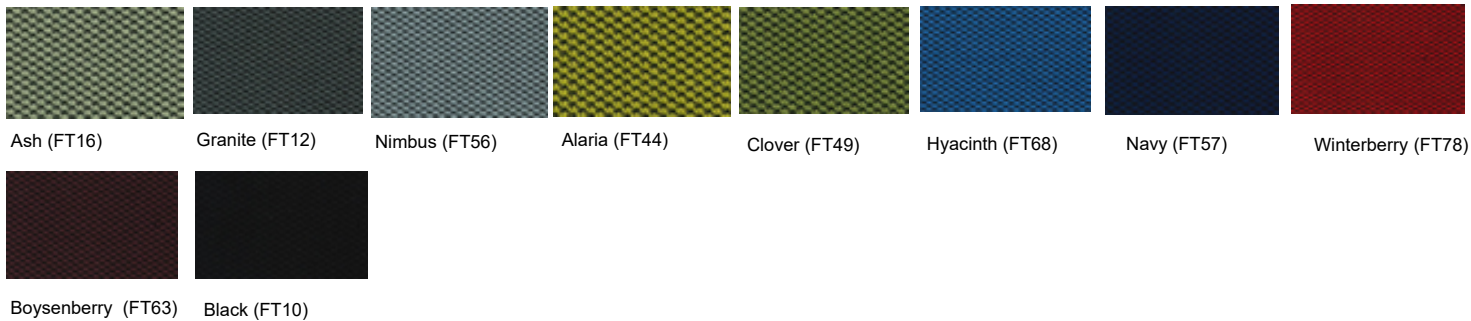
Lotus Textile Grade 1



Ginkgo Textile Grade 2



Fourtis Textile Grade 1



World Chair Mesh Options - Limited mesh patterns available for World seats (see green box).

World Task chair mesh seats only available in Dash, Pinstripe, or Catena mesh. Monofilament Stripe, Silver Check not available for World Task Chair seats.

Mesh seat not available on World Sled-base Guest chair .

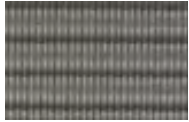
Monofilament Stripe Mesh



Black (M10)



Carbon (M11)



Platinum (M14)



Green (M41)



Atlantic (M51)



Amber (M81)

Silver Check Mesh

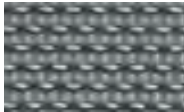


Alloy (C12)



Topaz (C32)

*** Dash Mesh**



Platinum (A14)

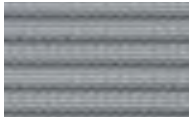


Zinc (A19)

*** Pinstripe Mesh**



White (N01)



Silver (N02)



Graphite (N03)



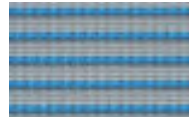
Black (N10)



Cadmium Yellow (N34)



Citron (N43)

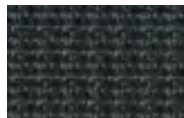


Cyan (N58)



Crimson (N74)

*** Catena Mesh**



Black (J10)



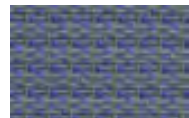
Poppy Seed (J1A)



Caraway (J1B)



Bayberry (J35)



Cornflower (J50)

CLASSROOMS, BREAKROOMS, ASSEMBLY - SitOnIt Seating

Rio Wire Rod Stacker - Classrooms & Team Rms - upholstered w/ Arms / Break Room - plastic shell w/ or w/o Arms / Assembly - plastic shell w/o Arms

Finishes & fabric cards: refer to website as per link below (NO COM)

Build model number: https://chairbuilder.sitonit.net/#StackNest/Rio2SideListing/_Rio2WireRod/config/RIO2WIREROD-PLASTIC/Front?Rio-Style=Rio.PS&Rio-WireRod-Arm=Rio.A131&Rio-ShellColor-SC1

Tag	Item	Model# - see link	Remarks
CH#	Rio Wire Rod Series Stacker w/ Arms - Plastic	Build model# as per link below	Upholstered seat and back in Classrooms and Team Rooms only
CH#	Rio Wire Rod Series Stacker w/ Arms - Upholstered	Build model# as per link below	



CH#	Rio Wire Rod Series Stacker Armless - Plastic (*Assembly)
CH#	Rio Wire Rod Series Stacker Armless - Upholstered

*Rio Armless Plastic Stacker used in the Assembly shall be selected in unique color specific to Assembly only



Chair Dolly for Rio Wire Rod Stacker

Tag	Item	Model# - see link	Remarks
CD1	Chair Truck for Rio series	RIO-CART	Holds: 15 - Plastic, 6 - Upholstered Show carts in Assembly Storage

WASTE & RECYCLE

ALLE'

Tag	Item	Model #	Remarks
W1	Wastebasket - Medium (7gal)	8128BK	Provide (1) per each desk unit & workstation
W2	Wastebasket - Large (10gal)	8188BK	Provide in classrooms, Library, Learning Center, Siprnet, Control Room
W3	Waste Receptacle (23gal)	8185BK w/ 7200BK swing lid	Assembly and Unit Common - where applicable
R1	Deskside Recycling - Medium (7gal)	8128BLR - Blue	Provide (1) per each desk unit & workstation
R2	Deskside Recycling - Large (10gal)	8188BLR - Blue	To accompany W2 (10gal) ex. Library Reading
R3	Recycling Waste Receptacle (23gal)	8185BLR w/ SP7228-1 lid (lid optional)	ex. Break Room, Unit Common - where applicable Assembly and/or Vending Area
R4	2 Stream Recycling (46gal)	SQ9545BLR	Where Applicable - Recycling Center, Staging Area, OMS etc. Recycling Center
R5	Recycling Container - Roll Out (50gal)	TW2341BLR	
R6	Recycling Container Truck (850lbs)	TTK5840BLR	

* Finish designator shall be included after product model number

Black - BK
Blue - BLR



RJE / ESI

Desk Lamp

Tag	Item	Model #	Remarks
TL1	Desk Lamp (silver)	Vivid-LEX-SLV	Provide at each workstation (w/ clamp) and/or desk unit without overhead storage
		Desk Clamp: DC-V-SLV	https://www.esiergo.com/search-results/sp/vivid-lex/



TL1



Desk Clamp: DC-V-SLV

MBI / VICTORY

Magnifying Lamp

Tag	Item	Model #	Remarks
TL2	Magnifying Lamp, Black	VS40203B	Provide at workbenches as needed - specify desktop or clamped, model # provides both type bases



TL2

V-LightAr Full-Spectrum Clamp 47.74 238.70
Magnifying Lamp
Clamp-on/Desktop Magnifier,
Black

En Net Services / TrickleStar

* Surge Protector shall be specified per each desk unit, workstation, bench typical, as well as Siprnet, Learning Center tables and workbenches. Tag # & qty to be included in the Room Contents List.

Surge Protector

Tag	Item	MODEL #	REMARKS
SP1	TrickleStar 7 Outlet Power Strip	TAA3102	Finish: white



Basis of design, Magnuson Group

Coat Rack

Tag	Item	Model #	Remarks
CT1	Coat Rack	MR-611H - coat rack MG-17PH (24pk) - hangers	Can be provided in Assembly and/or Unit Common - not mandatory



WW Grainger

For info contact: Andrea Muller , Govt Acct MGR - Andrea.Muller@grainger.com
 901 Plantside Drive / Louisville KY
 Cell: (859) 351-8970 | GRAINGER: 1-800-GRAINGER (1-800-472-4643)

Utility Cart

Tag	Item	Model #	Remarks
UC1	Utility Cart	# 35U047	Can be provided in Training Aid Storage - not mandatory



Dehumidifier

Tag	Item	Model #	Remarks
UC1	Industrial Portable Dehumidifier 124 pt, 115V, 60Hz	# GDC124CSS Fantech	Arms Vault



Fire extinguisher

Tag	Item	MODEL #	Tag	Item	MODEL #	REMARKS
FE1	ABC Dry Chemical - 10lb	ABC,4A:80B:C	FE2	Wet Chemical - 1A:K, Wet Chemical, 6 L (Kitchens)	50006	Bona Fide Need specifaion only / Country of Origin: USA Specify Tagged & Certified



FPI / UNICOR

Lectern & Freestanding Literature Rack

Tag	Item	Model #	Remarks
LE1	Mobile Full Height Lectern - Open Back w/ casters	HFHL2424480 - Harmony Laminates only	24"w x 46"h x 23"d - Harmony laminates - Classrooms
LE2	Mobile Full Height Lectern - Powered, doors w/ casters	I3248FHL	32"w x 48"h x 18"d - w/ power-up - Assembly or large Conference Rms
LR1	Freestanding Literature Rack	I5217MAGRACK	17"w x 52"h double sided

See following pages for finishes per spec requirements



LE1



LE2



LR1 Lobby - qty.2 min
Family Support - qty.2
Rec. Retention - qty.2

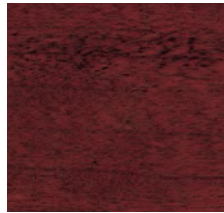
WOOD FINISHES



Walnut
WN



Cherry
CH



Mahogany
MH

HARDWARE FINISHES



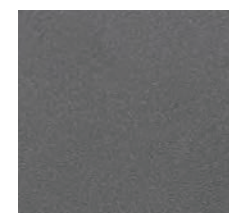
Satin Black

(Standard on Harmony)



Polished Brass
PB

(Standard on
Baritone & Symphony)



Black Graphite
BG

(Standard on Concerto)



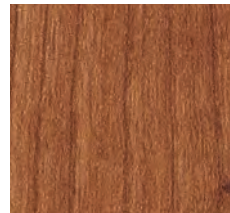
Brush Nickel

(Standard on
Integrate & Relevance)

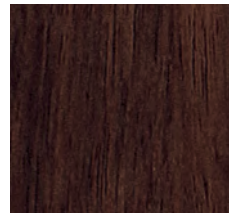
WOOD LAMINATE FINISHES



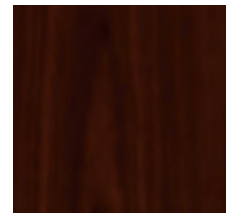
Kensington Maple *
KE 10776-78
PLM-1077



Amber Cherry *
AB 7919-78
PLM-7919



Colombian Walnut *
CI 7943K-78
PLM-7943



Noble Mahogany *
NM 9236-NG
PLM-9236

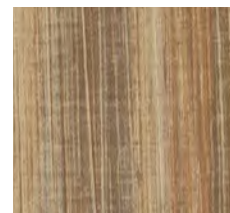


Shaker Cherry *
SK 7935K-78
PLM-7935

* – Finishes with matching trim.
○ – Integrate casegoods finishes.



Sterling Ash
SA 7995-78
PLM-7995



Buka Bark *
BK 7982-78
PLM-7982



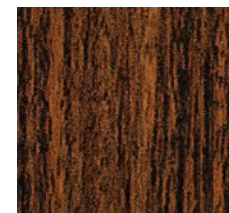
Biltmore Cherry *
BT 7924K-78
PLM-7924



Studio Teak *
SU 7960K-78
PLM-7960



Harvest Maple *
HM 7953-78
PLM-2616



Rio *
RI 7947K-78
PLM-0554

SOLID LAMINATE FINISHES



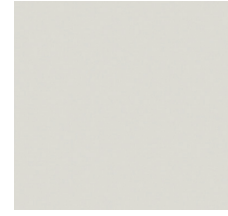
Sail White
AA 463-58
PLM-0058



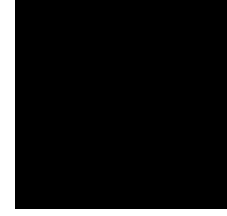
Pumice
FF 858-58
PLM-2515



Oyster Gray
BM 929-58
PLM-2519



Graystone
FH 464-58
PLM-2505



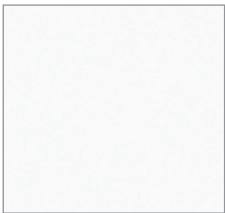
Black *
AG 909-58
PLM-0111



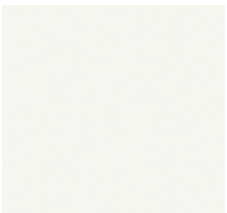
Mouse
FM 928-58
PLM-2518



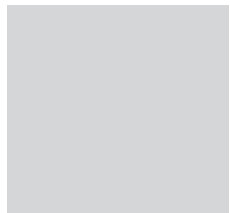
Graphite
FN 837-58
PLM-2514



Brite White *
FP 459-58
PLM-0630



Neutral White
FG 918-58
PLM-2516



Fashion Gray *
RS D381-60
PLM-0787



Folkstone
FK 927-58
PLM-2517

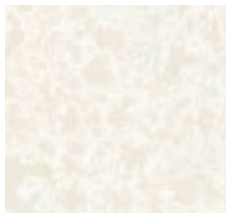


Dove Grey
DD D92-58
PLM-1013

* – Finishes with matching trim.
○ – Integrate casegoods finishes



PATTERN LAMINATE FINISHES



Sail White Oxide
FA 300-58
PLM-0133



Flax Gauze
BP 7708-58
PLM-2513



SandStone
AU 7265-58
PLM-0067



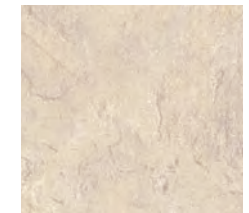
Shoji Screen
BN 3696-58
PLM-2504



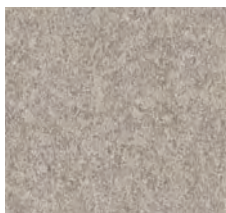
Pewter Mesh
DA 4878-38
PLM-4046



White Tigris
CP 4783-60
PLM-4043



Natural Canvas
FC 7022-58
PLM-2509



Canyon Zephyr
CU 4842-60
PLM-4038



Misted Zephyr
CV 4843-60
PLM-4040



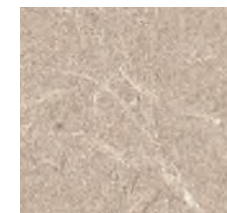
Twilight Zephyr
CX 4845-60
PLM-4041



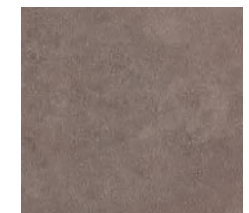
Desert Zephyr
CS 4841-60
PLM-4039



Steel Mesh
DB 4879-38
PLM-4068



Grey Tigris
CT 4670-60
PLM-4042



Earth Wash
FE 7213-58
PLM-2510

HARMONY SOLID LAMINATE FINISHES



Fog
F 961

HARMONY WOOD LAMINATE FINISHES



Vosges Pear
P 1150



Ginger Root Maple
G 7288



Pennsylvania Cherry
C 91536

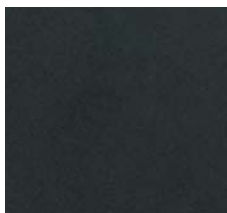


Washington Oak
O 91784



Mahogany
M 91818

HARDWARE FINISH



Satin Black
(Standard on Harmony)

HARMONY EDGE



Black Ribbed Edge Banding
(Standard on Harmony)

Lyon **Note: 36"D top no longer available.**

Workbenches Finish: DD-Dove Gray standard color

Tag	Item	Model #	Remarks
WA1	Workbench w/ Wood Top & Shelf Riser - 60x30x36	NF251WHD60 / DD2628- Wood top & Shelf Riser DD2628 - Shelf Riser DD251WSSR / WSSL /WBS60 - End & Back Stops DD2630 - Pick Rack NF78206 - Bins (qty. 10) DD251OPL400 - Panel Leg Open DD251STR60WB - Stringer for 60" workbench	Specify for Armorer, also add surge protector and V-Light TL2 task light w/ clamp
WA2	Workbench w/ Wood Top & Shelf Riser - 72x30x36	NF251WHD72 / DD2628- Wood top & Shelf Riser DD2629 - Shelf Riser DD251WSSR / WSSL /WBS72 - End & Back Stops DD2631 - Pick Rack NF78206 - Bins (qty. 10) DD251OPL400 - Panel Leg Open DD251STR72WB - Stringer for 72" workbench	Specify for Armorer, also add surge protector and V-Light TL2 task light w/ clamp
WB1	Workbench w/ Wood Top - 60x30x36	NF251WHD60 - Wood top DD251WSSR / WSSL / WBS60 - End & Back Stops DD251OPL400 - Panel Leg Open DD251STR60WB - Stringer for 60" workbench	Specify for OMS, also add surge protector and V-Light TL2 task light w/ clamp
WB2	Workbench w/ Wood Top - 72x30x36	NF251WHD72 - Wood top DD251WSSR / WSSL / WBS72 End & Back Stops DD251OPL400 - Panel Leg Open DD251STR72WB- Stringer for 72" workbench	Specify for OMS, also add surge protector and V-Light TL2 task light w/ clamp

Steel tops for workbenches - by User special request

Steel Top - 60"w (12 gauge)	251WSL60
Steel Top - 72"W (12 gauge)	251WSL72
Steel Top - 60"w (16 gauge)	251WST60
Steel Top - 72"W (16 gauge)	251WST72

Claflin Medical Equipment (CME)

Physician Scale, Ergo Bike & Adj Laptop / Transport Stand

Bike and Digital Scale to be specified in Physical Readiness. Always include power cord w/ scale

Tag	Item	Model #	Remarks
DS1	SECA Digital Column Scale & Power cord	CESS-700252-00001 CESS-727536-00001 (power cord)	11.6 x 32.7 x 16.4 inch, weight capacity 450lbs - qty. 1 in Physical Readiness Include power cord w/ each scale
RC2	Monark Testing Ergonomic Bike	Ergomedic 828E Kilogram Calibration Weight 9000-211	Stationary Bicycle Cardiovascular Tester, 44"W x 28"D x 35-44.5"H - qty. 1 in Physical Readiness (include weight)

La-Z-Boy Contract - RJE / La-Z-Boy

Glider - Lactation Rm (1 glider per ARC)

Tag	Item	Model #	Remarks
CH#	Harmony Glider	HA1716	CHAIR: http://www.lzbcontract.com/lzb/Gliders/Harmony/HA1716 - qty. 1 in Lactation FINISHES: http://lzbcontract.com/Finishes/SampleBrowser.jsp?lid=1005&psx=1002 NO COM (in website, click on fabric selection to show grade or COM specification) Specify arm cap and handle color (black is standard) Specify locking mechanism handle location (right or left)



DS1



RC2



CH#

PHYSICAL READINESS ROOM EQUIPMENT MATRIX SEE FOLLOWING PAGES FOR EQUIPMENT SPECIFICATIONS

	AT1	EC1	TR1	RC1	FB1	IB1	DB1	DB2	DR1	MS1	MS2	MS3	MS4	MS7	MS6	MS5	PC1**	FM1
Nominal Area (sq. ft.)*	Adaptive Motion Trainer	Elliptical Cross Trainer	Treadmill	Recumbent Bike	Flat Bench	Incline Bench	5-50 Lbs Dumbbell Set	55-100 Lbs Dumbbell Set	Dumbbell rack	45 Deg. Back Extension	Leg Press	Multi-Press	Lat Pull	Row	Leg Raise/Dip	Bent Leg Ab Board	Power Cage w/Weight Set	Fitness Mats
1600	1	3	4	2	3	3	2	1	3	1	2	2	2	2	1	1	1	10
1500	1	3	4	2	3	3	2	1	3	1	2	2	2	2	1	1	1	8
1400	1	3	4	2	2	2	1	1	2	1	2	1	2	2	1	1	1	8
1300	1	3	3	2	2	2	1	1	2	1	2	1	2	1	1	1	1	8
1200	1	3	3	2	2	2	1	1	2	1	1	1	2	1	1	1	1	6
1100	1	2	3	2	2	2	1	1	2	1	1	1	1	1	1	1	1	6
1000	1	2	2	1	2	2	1	1	2	1	1	1	1	1	1	1	1	6
900	1	2	2	1	1	1	1	0	1	1	1	1	1	1	1	1	1	6
800	1	2	2	1	1	1	1	0	1	1	1	1	1	0	0	1	1	6
700	1	2	2	1	1	1	1	0	1	1	1	1	1	0	0	1	1	4
600	1	2	2	1	1	1	1	0	1	1	1	1	1	0	0	1	1	4
500	0	2	2	1	1	1	1	0	1	1	1	1	1	0	0	0	0	4
400	0	1	1	1	1	1	1	0	1	1	1	0	0	0	0	0	0	4
300	0	0	1	1	1	1	1	0	1	0	0	0	0	0	0	0	0	4
200	0	0	1	1	1	1	1	0	1	0	0	0	0	0	0	0	0	2

*ALL PHYSICAL READINESS ROOMS TO INCLUDE:

1 Digital Column Scale - DS1

1 Testing Ergometer Bike - RC2

**PC1 - include specs for weight plates, power bar, and pinch collars as listed on following page.

FITNESS EQUIPMENT - REFER TO PHYSICAL READINESS EQUIPMENT MATRIX ON PREVIOUS PAGE FOR QUANTITIES PER ROOM SIZE.

Basis of design - Cybex, Precor, & Flaghouse - see Claflin Medical for DS1 scales and RC2 Ergonomic Testing Bicycle to be specified in all Physical Readiness

Cybex, or equal See next page for color options

Tag	Item	Model #	Remarks	Cybex standard colors
DB1	Dumbbell Set	DBS2-SET-1	5-50lbs	<u>Std Cybex Upholstery Colors</u> (see next page for color chart) Dove Grey charcoal black burgundy navy hunter green grotto royal blue azure crocus cranberry american beauty red wheat suede
DB2	Dumbbell Set	DBS2-SET-2	55-100lbs	
DR1	Twin-tier Dumbbell Rack	16250	Holds only 1 set of dumbbell set (10 pairs of dumbbells)	
FB1	Flat Bench	16041	-	
IB1	Adjustable Incline Bench	16001	IB1 Bench also specified for power cage	
PC1	Power Cage	16240	36"D x 96"H	
	<u>Also specify weight plates, power bar, and pinch collars as listed here.</u>	OPS1-02.5	2.5lbs (qty. 4)	
		OPS1-005	5lbs (qty. 8)	
		OPS1-010	10lbs (qty. 8)	
		OPS1-025	25lbs (qty. 8)	
		OPS1-035	35lbs (qty. 4)	<u>Std Frame Colors</u> (see next page for color chart) black chrome platinum sparkle metaltone gold black texture white texture
		OPS1-045	45lbs (qty. 8)	
	7' Power Bar	OB20-SS-IWF	qty. 1	
	Pinch Collars	51016	qty. 2 pairs	
MS1	45 Degree Back Extension	16022	Linear arrangement is preferred and equipment matrix shall be followed	
MS2	VR1 Leg Press	13041	-	
MS3	VR1 Dual Multi-Press	13240	-	
MS4	VR1 Lat Pulldown	13130	-	
MS5	Bent Leg Ab Board	16171	-	
MS6	Leg Raise/Dip	16180	-	
MS7	VR1 Row	13030	-	

Precor, or equal Colors are standard - no options

Tag	Item	Model #	Remarks
AT1	Adaptive-Motion Trainer	AMT835	Self-powered
EC1	Elliptical Crosstrainer	EFX835	Self-powered
RC1	Recumbent Cycle	RBK835	Self-powered
TR1	Treadmill	TRM835-120v	Designated outlet is required, back of treadmill is to be roomside for safety

CME (Claflin Medical Equipment), or equal See previous CME page for photos

Tag	Item	Model #	Remarks
DS1	SECA Digital Column Scale & Power cord	CESS-700252-00001 CESS-727536-00001 (power cord)	11.6 x 32.7 x 16.4 inch, weight capacity 450lbs- qty. 1 in Physical Readiness Include power cord w/ each scale
RC2	Monark Testing Ergonomic Bike	Ergomedic 828E , include Kilogram Calibration Weight 9000-211	Stationary Bicycle Cardiovascular Tester, 44"W x 28"D x 35-44.5"H















Flaghouse, or equal

Tag	Item	Model #	Remarks
FM1	Floor Mat - Black	832460BLK	Shall be placed at the mirror location in Physical Readiness - qty. 2 side by side, the rest shall be stacked to allow more room for weight training equipment. Also specify (5) for Weapon Simulator Room.



customization

Standard Upholstery Colors

	dove grey
	charcoal
	black
	burgundy
	navy
	hunter green
	grotto
	royal blue
	azure
	crocus
	cranberry
	american beauty red
	wheat
	suede

Standard Frame Colors

	black chrome
	platinum sparkle
	metaltone gold
	black texture
	white texture

Actual frame and upholstery colors may differ slightly from samples shown.

CYBEX individually manufactures each piece of equipment to order, providing an unmatched range of customization options. This means virtually unlimited frame and upholstery color availability to complement your facility's unique look. Whether you want your club's logo embroidered or applied on a molded decal, CYBEX is ready to combine our superior technology in customization to bring a personal touch into your facility.

