



ROUGH RIVER DAM INTERIM RISK REDUCTION MEASURES

March 2023

Overview

The U.S. Army Corps of Engineers, Louisville District is implementing Interim Risk Reduction Measures (IRRM) to ensure life safety and to further protect the integrity of Rough River Dam in Falls of Rough, Kentucky.

The IRRM implementation is based on a recommendation from a risk assessment that evaluated the existing condition of the dam and its foundation to assess the structure's ability to operate as designed in the event of a flood. The evaluation identified several IRRM until Phase II of the Dam Safety Modification Project is complete. Phase II of the project will consist of a new outlet works and cutoff wall and is awaiting additional funding.

The risk associated with Rough River Dam does not meet current tolerable levels in its current condition; therefore, action must be taken to reduce risk to human life and property.

After thorough analysis, USACE technical experts recommend reducing water levels in the reservoir to relieve pressure on the dam.

Interim Risk Reduction Measures



Pool Restriction

Target summer pool elevation of 490 feet, which is 5 feet below normal summer pool, until long-term repairs to the dam can be completed.



Delayed Fill Schedule


Typically, the reservoir begins holding back water for the recreation season on March 15. The operation of the dam will be revised to begin the rise to the new summer pool target approximately two weeks later beginning on April 1.


Interim risk reduction measures allow USACE to reduce risk to the public and help to ensure that the dam is safe until long-term repairs to the dam can be completed. USACE will continue to monitor the dam, and implemented risk reduction measures will be re-evaluated annually. Adjustments will be made, as required, to ensure the safety of the Rough River community.




FOR MORE INFORMATION:


Louisville District Public Affairs Office

 (502) 315-6766

 lrl-pao@usace.army.mil

Rough River Lake Project Office

 (270) 257-2061

 www.lrl.usace.army.mil/Missions/Civil-Works/Recreation/Lakes/Rough-River-Lake/Rough-River-Dam-Safety-Modification-Project/

SCAN ME



RECREATION IMPACTS

Recreation Impacts

As USACE takes action to reduce risk to the public, the Corps recognizes there will be impacts to recreation. USACE values our partnerships with local, state, and federal agencies and all of those throughout the Rough River community. USACE will continue to work with all parties to lessen the impact of interim risk reduction measures, where possible. Based on the proposed elevation of 490, Rough River Lake will still be able to provide multiple recreation benefits to visitors.

Two public beaches will be impacted (North Fork and State Park) and some private docks. Marinas, USACE-managed boat ramps, most licensed out granted boat ramps and USACE managed day-use areas should be able to operate as normal, or with minimal changes, this recreation season.



Boat Ramps

- 18 of 21 boat ramps still accessible



Beaches

- North Fork and the State Park Beach will be impacted
- Laurel Branch Public Use Beach will be open
- Axtel will be open for campers only



Marinas

- Limited impacts to Marinas



Campgrounds

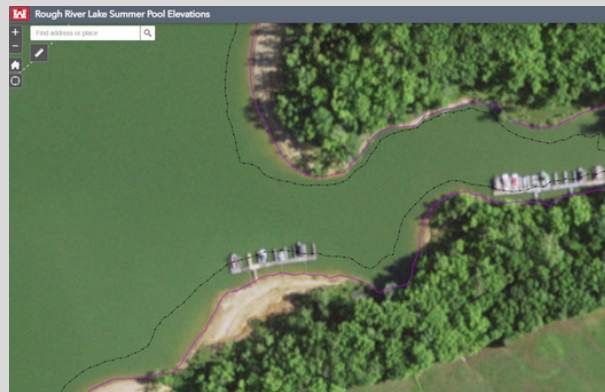
- All USACE-managed campgrounds will be open as usual



Private Docks

- Approximately 60% of docks may be impacted
- Of those, approximately 40% of docks may be moved further from shore
- Private dock permit holders must coordinate with the Rough River Lake Project Office to determine if a temporary extension or relocation is possible.
- Additional details can be found online at: www.lrl.usace.army.mil/Missions/Civil-Works/Recreation/Lakes/Rough-River-Lake/Rough-River-Dam-Safety-Modification-Project/

ROUGH RIVER LAKE SUMMER POOL ELEVATION VIEWER



The Rough River Lake Summer Pool Elevation Viewer map displays the current Rough River Lake Summer Pool (495 feet) represented by a light purple line, compared to the proposed summer pool (490 feet) represented by the dashed black line. Users may enter an address or place into the search bar to zoom directly to a desired location.

Disclaimer: The Rough River Lake Summer Pool Elevation Viewer was designed for informational purposes only and does not guarantee the right to move or alter a dock. Private dock permit holders should coordinate with the Rough River Lake Project Office to determine if a dock extension or relocation is possible.

To access the viewer:

<https://lrl.maps.arcgis.com/apps/webappviewer/index.html?id=0c713a0f6f5843b5a0de8e70ec701ff7>

SCAN ME

