



**US Army Corps
of Engineers**
Louisville District

Notice to Navigation Interests

Notice No. 2019-034

Date: June 12, 2019

<http://www.lrl.usace.army.mil/Missions/CivilWorks/Navigation/Notices.aspx>

In Reply Refer to: CELRL-OPL PO Box 59, Louisville, KY 40201 Telephone: 502-315-6366

LOUISVILLE DISTRICT

REVISED LOCKS AND DAM 53 NAVIGATION LANE

OHIO RIVER

REFERENCE: Navigation Notice #2019-012, dated April 2, 2019
 Navigation Notice #2019-020, dated April 24, 2019
 Navigation Notice #2019-021, dated May 2, 2019
 Navigation Notice #2019-024, dated May 15, 2019
 Navigation Notice #2019-029, dated May 30, 2019

The navigation lane at Olmsted Locks and Dam (Ohio River Mile 964.6) will remain where it has been since 04 June 2019 until further notice. The lane is approximately 900' wide. See References 1 and 2, attached.

Effective 11 June 2019, the navigation lane at Locks and Dam 53 (Ohio River Mile 962.6) was narrowed from approximately 1100' to 900' to facilitate demolition activities. The lane remains overtop the Chanoine Weir, Bebout Weir, Bear Traps, and Fixed. See References 3 and 4, attached. The Locks and Dam 53 structures in that lane remain there, with top elevation of approximately EL 293.0 (ORD), so the navigation lane will be changed back to the Navigable Pass if the River Elevation recedes below EL 308 (ORD), which corresponds to approximately 29' on the Olmsted Upper Gage.

All mariners will take direction from the Olmsted Locks and Dam control tower. A helper boat will be assisting industry traffic through the restricted navigation pass at Olmsted.

/s/

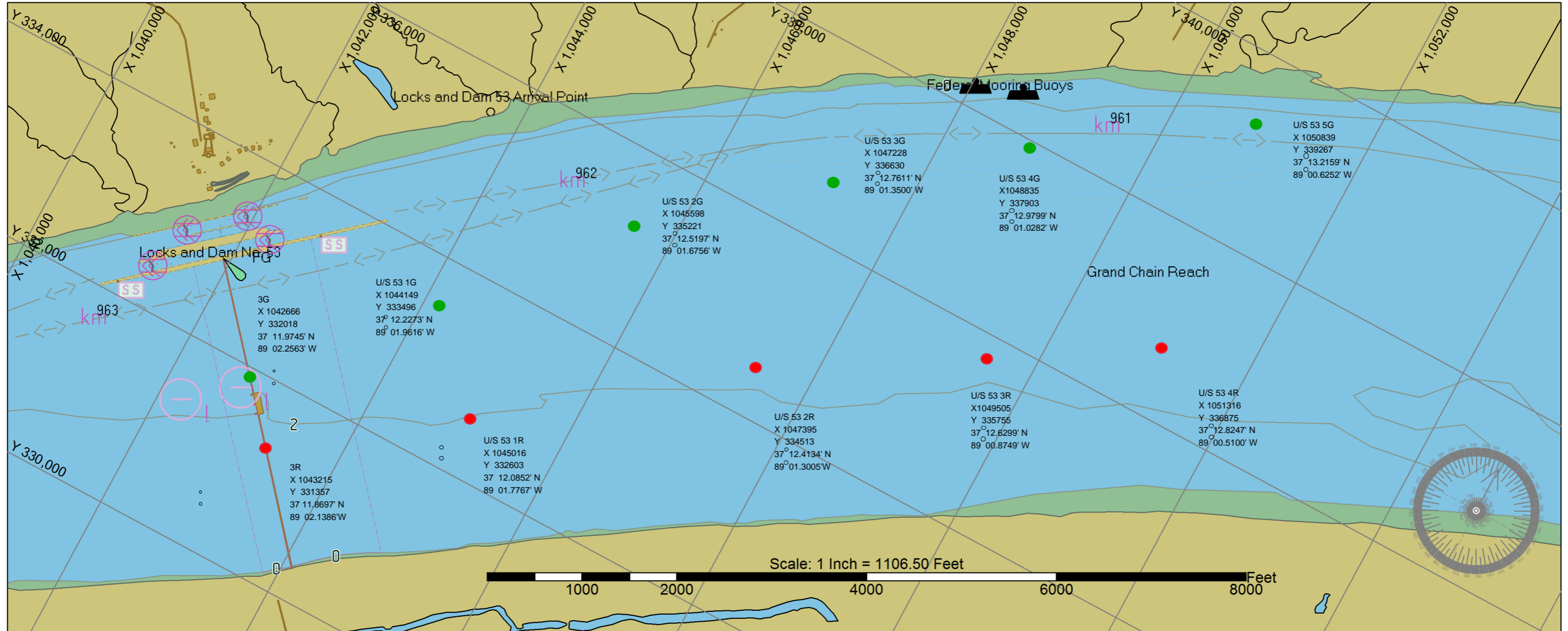
Shawn Kenney, P.E.
Assistant Operations Manager
Locks and Dams Project Office

REFERENCE 2

Channel Fairway & Buoys ~Master ~ Work Area

<u>#</u>	<u>Type</u>	<u>General Location</u>	<u>Easting X</u>	<u>Northing Y</u>	<u>θ Latitude (GPS)</u>	<u>λ Longitude (GPS)</u>	<u>Notes</u>
3G	Green	Up-Stream	1042666	332018	37° 11.9745' N	89° 02.2563' W	In Location
4G	Green	Up-Stream	1039114	329243	37° 11.5099' N	89° 02.9818' W	In Location
5G	Green	Lower-Up-Mid-Stream	1037814	328057	37° 11.2952' N	89° 03.2268' W	In Location
6G	Green	Upper-Mid-Stream	1035785	326024	37° 10.9486' N	89° 03.6298' W	In Location
7G	Green	Lower-Mid-Stream	1034727	325089	37° 10.7885' N	89° 03.8408' W	In Location
8G	Green	Down-Stream	1033632	324190	37° 10.6342' N	89° 04.0597' W	In Location
9G	Green	Down-Stream	1032265	323166	37° 10.4576' N	89° 04.3336' W	In Location
3R	Red	Up-Stream	1043215	331357	37° 11.8697' N	89° 02.1386' W	In Location
4R	Red	Up-Stream	1039712	328750	37° 11.4322' N	89° 02.8552' W	In Location
5R	Red	Lower Up-Stream	1038500	327600	37° 11.2239' N	89° 03.0823' W	In Location
6R	Red	Upper Mid-Stream	1036399	325367	37° 10.8440' N	89° 03.4987' W	In Location
7R	Red	Lower Mid-Stream	1035696	324744	37° 10.7373' N	89° 03.6389' W	In Location
8R	Red	Down Stream	1034222	323515	37° 10.5264' N	89° 03.9333' W	In Location
9R	Red	Down Stream	1033029	322425	37° 10.3103' N	89° 04.1697' W	In Location

REFERENCE 3



REFERENCE 4

Channel Fairway & Buoys ~Master ~ Work Area

<u>#</u>	<u>Type</u>	<u>General Location</u>	<u>Easting X</u>	<u>Northing Y</u>	<u>θ Latitude (GPS)</u>	<u>λ Longitude (GPS)</u>	<u>Notes</u>
U/S 53 1G	Green	Up-Stream 53	1044149	333496	37° 12.2273' N	89° 01.9616' W	New Location
U/S 53 2G	Green	Up-Stream 53	1045598	335221	37° 12.5197' N	89° 01.6756' W	New Location
U/S 53 3G	Green	Up-Stream 53	1047228	336630	37° 12.7611' N	89° 01.3500' W	New Location
U/S 53 4G	Green	Up-Stream 53	1048835	337903	37° 12.9799' N	89° 01.0282' W	New Location
U/S 53 5G	Green	Up-Stream 53	1050839	339267	37° 13.2159' N	89° 00.6252' W	New Location
U/S 53 1R	Red	Up-Stream 53	1045016	332603	37° 12.08522' N	89° 01.7767' W	New Location
U/S 53 2R	Red	Up-Stream 53	1047395	334513	37° 12.4134' N	89° 01.3005' W	New Location
U/S 53 3R	Red	Up-Stream 53	1049505	335755	37° 12.6299' N	89° 00.8749' W	New Location
U/S 53 4R	Red	Up-Stream 53	1051316	336875	37° 12.8247' N	89° 00.5100' W	New Location