



**US Army Corps  
of Engineers**  
Louisville District

# Notice to Navigation Interests

Notice No. 2019-024

Date: May 15, 2019

<http://www.lrl.usace.army.mil/Missions/CivilWorks/Navigation/Notices.aspx>

---

In Reply Refer to: CELRL-OPL PO Box 59, Louisville, KY 40201 Telephone: 502-315-6366

---

*LOUISVILLE DISTRICT*

## **REVISED OLMSTED LOCKS AND DAM**

### **RESTRICTED NAVIGATION PASS AND 4 HOUR CLOSURES,**

### **AND LOCKS AND DAM 53 NAVIGATION LANE CHANGE**

## **OHIO RIVER**

**REFERENCE:** Navigation Notice #2019-012, dated April 2, 2019  
Navigation Notice #2019-020, dated April 24, 2019  
Navigation Notice #2019-021, dated May 2, 2019

Effective 0800 CDT, 16 May 2019 until further notice, the navigation pass at Olmsted Locks and Dam (Ohio River Mile 964.6) will be restricted to approximately 420' wide, to facilitate construction diving operations.

The navigation lane at Locks and Dam 53 (Ohio River Mile 962.6) will remain where it has been since 03 May 2019, overtop the Chanoine Weir, Bebout Weir, Bear Traps, and Fixed Weir to facilitate demolition activities. The Locks and Dam 53 structures in that lane remain there, with top elevation of approximately EL 293.0 (ORD), so the navigation lane will be changed back to the Navigable Pass if the River Elevation recedes below EL 308 (ORD), which corresponds to approximately 29' on the Olmsted Upper Gage.

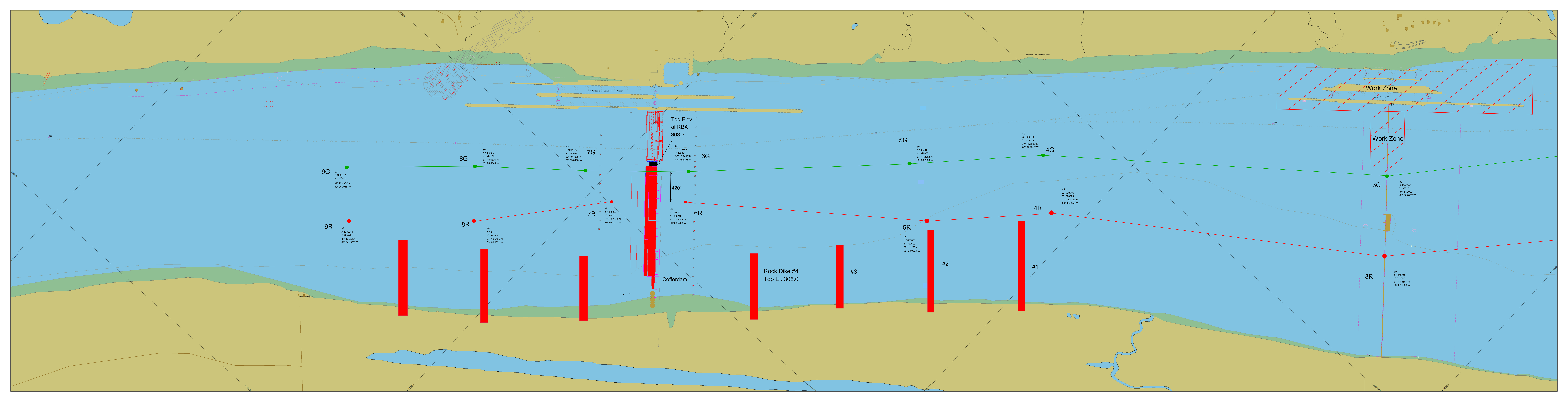
Please see reference overview attachments marking the navigation lane.

On 17, 18, and 20 May 2019, the river will be closed to navigation at Olmsted Locks and Dam for one four hour period each day between 0900 and 1500 CDT to facilitate construction diving operations.

All mariners will take direction from the Olmsted Locks and Dam control tower. A helper boat will be assisting industry traffic through the restricted navigation pass at Olmsted, and a second helper boat will be assisting industry traffic through the navigation lane at Locks and Dam 53.

/s/

Shawn Kenney, P.E.  
Assistant Operations Manager  
Locks and Dams Project Office



Top Elev.  
of RBA  
303.5'

420'

Cofferdam

Rock Dike #4  
Top El. 306.0

Work Zone

Work Zone

9G

X 1032414  
Y 323014  
37° 10.4334' N  
89° 04.3018' W

9R

X 1032914  
Y 322514  
37° 10.3540' N  
89° 04.1963' W

8G

X 1033657  
Y 324186  
37° 10.6238' N  
89° 04.0545' W

8R

X 1034134  
Y 323604  
37° 10.5405' N  
89° 03.9521' W

7G

X 1034727  
Y 325069  
37° 10.7885' N  
89° 03.8408' W

7R

X 1035377  
Y 325103  
37° 10.7848' N  
89° 03.7071' W

6G

X 1035785  
Y 326024  
37° 10.8486' N  
89° 03.6298' W

6R

X 1036063  
Y 325710  
37° 10.8985' N  
89° 03.5703' W

5G

X 1037814  
Y 326067  
37° 11.2562' N  
89° 03.2268' W

5R

X 1038500  
Y 327900  
37° 11.2289' N  
89° 03.0823' W

4G

X 1039048  
Y 329318  
37° 11.5099' N  
89° 02.9818' W

4R

X 1039646  
Y 328825  
37° 11.4322' N  
89° 02.8562' W

3G

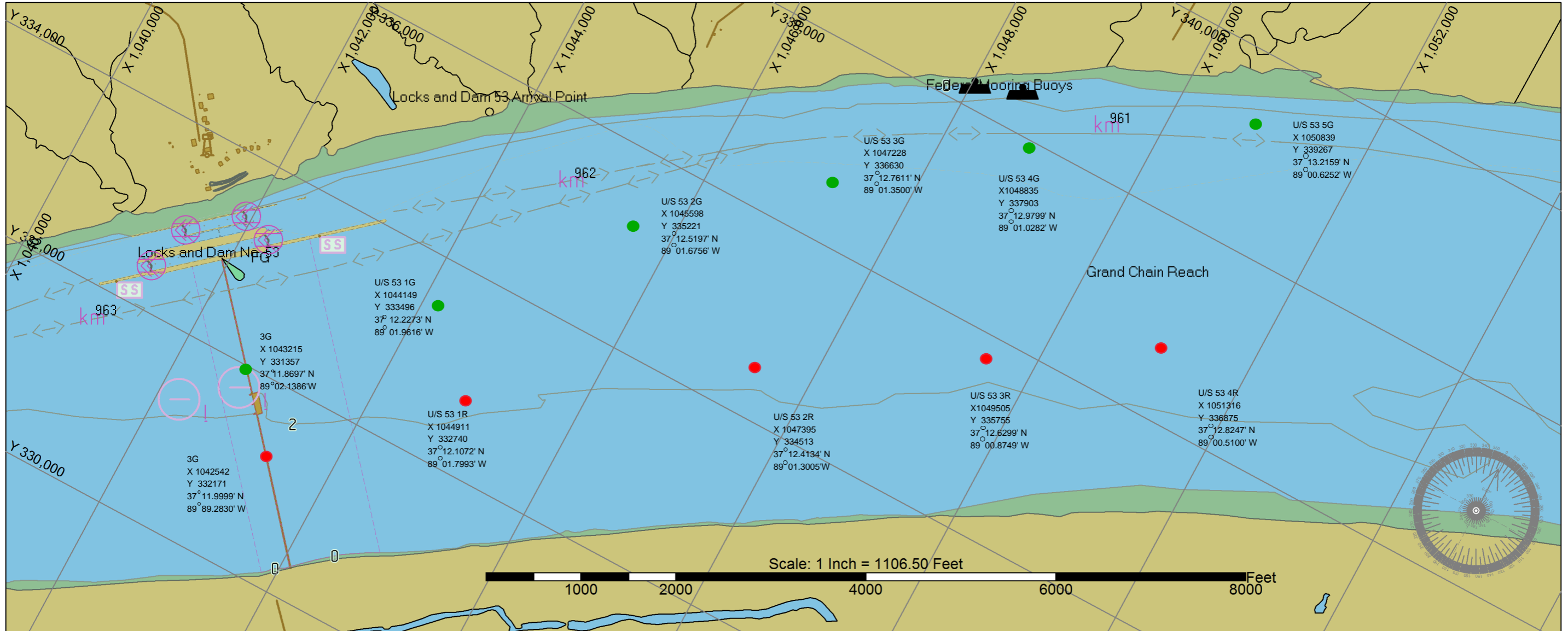
X 1042542  
Y 332171  
37° 11.9999' N  
89° 02.2630' W

3R

X 1043215  
Y 331357  
37° 11.8697' N  
89° 02.1380' W

**Channel Fairway & Buoys ~Master ~ Work Area**

<b><u>#</u></b>	<b><u>Type</u></b>	<b><u>General Location</u></b>	<b><u>Easting X</u></b>	<b><u>Northing Y</u></b>	<b><u>θ Latitude (GPS)</u></b>	<b><u>λ Longitude (GPS)</u></b>	<b><u>Notes</u></b>
3G	Green	Up-Stream	1042542	332171	37° 11.9999' N	89° 02.2830' W	In Location
4G	Green	Up-Stream	1039114	329243	37° 11.5099' N	89° 02.9818' W	In Location
5G	Green	Lower-Up-Mid-Stream	1037814	328057	37° 11.2952' N	89° 03.2268' W	In Location
6G	Green	Upper-Mid-Stream	1035785	326024	37° 10.9486' N	89° 03.6298' W	In Location
7G	Green	Lower-Mid-Stream	1034727	325089	37° 10.7885' N	89° 03.8408' W	In Location
8G	Green	Down-Stream	1033657	324186	37° 10.6336' N	89° 04.0545' W	In Location
9G	Green	Down-Stream	1032414	323014	37° 10.4334' N	89° 04.3018' W	In Location
3R	Red	Up-Stream	1043215	331357	37° 11.8697' N	89° 02.1386' W	In Location
4R	Red	Up-Stream	1039712	328750	37° 11.4322' N	89° 02.8552' W	In Location
5R	Red	Lower Up-Stream	1038500	327600	37° 11.2239' N	89° 03.0823' W	In Location
6R	Red	Upper Mid-Stream	1036063	325710	37° 10.8985' N	89° 03.5703' W	In Location
7R	Red	Lower Mid-Stream	1035377	325103	37° 10.7946' N	89° 03.7071' W	In Location
8R	Red	Down Stream	1034134	323604	37° 10.5405' N	89° 03.9521' W	In Location
9R	Red	Down Stream	1032914	322514	37° 10.3540' N	89° 04.1953' W	In Location



**Channel Fairway & Buoys ~Master ~ Work Area**

<b><u>#</u></b>	<b><u>Type</u></b>	<b><u>General Location</u></b>	<b><u>Easting X</u></b>	<b><u>Northing Y</u></b>	<b><u><math>\theta</math> Latitude (GPS)</u></b>	<b><u><math>\lambda</math> Longitude (GPS)</u></b>	<b><u>Notes</u></b>
U/S 53 1G	Green	Up-Stream 53	1044149	333496	37° 12.2273' N	89° 01.9616' W	In Location
U/S 53 2G	Green	Up-Stream 53	1045598	335221	37° 12.5197' N	89° 01.6756' W	In Location
U/S 53 3G	Green	Up-Stream 53	1047228	336630	37° 12.7611' N	89° 01.3500' W	In Location
U/S 53 4G	Green	Up-Stream 53	1048835	337903	37° 12.9799' N	89° 01.0282' W	In Location
U/S 53 5G	Green	Up-Stream 53	1050839	339267	37° 13.2159' N	89° 00.6252' W	In Location
U/S 53 1R	Red	Up-Stream 53	1044911	332740	37° 12.1072' N	89° 01.7993' W	New Locatio
U/S 53 2R	Red	Up-Stream 53	1047395	334513	37° 12.4134' N	89° 01.3005' W	New Location
U/S 53 3R	Red	Up-Stream 53	1049505	335755	37° 12.6299' N	89° 00.8749' W	New Location
U/S 53 4R	Red	Up-Stream 53	1051316	336875	37° 12.8247' N	89° 00.5100' W	New Location