



US Army Corps  
of Engineers  
Louisville District

# Notice to Navigation Interests

Notice No. 2019-045

Date: July 24, 2019

<http://www.lrl.usace.army.mil/Missions/CivilWorks/Navigation/Notices.aspx>

---

In Reply Refer to: CELRL-OPL PO Box 59, Louisville, KY 40201 Telephone: 502-315-6366

---

*LOUISVILLE DISTRICT*

## REVISED LOCKS AND DAM 53

## NAVIGATION LANE CHANGE

## OHIO RIVER

**REFERENCE:** Navigation Notice #2019-021, dated May 2, 2019  
Navigation Notice #2019-029, dated May 30, 2019  
Navigation Notice #2019-034, dated June 12, 2019  
Navigation Notice #2019-043, dated July 11, 2019

The navigation lane at Olmsted Locks and Dam (Ohio River Mile 964.6) will remain unchanged over the navigation pass at approximately 900' wide. See References 1 and 2, attached.

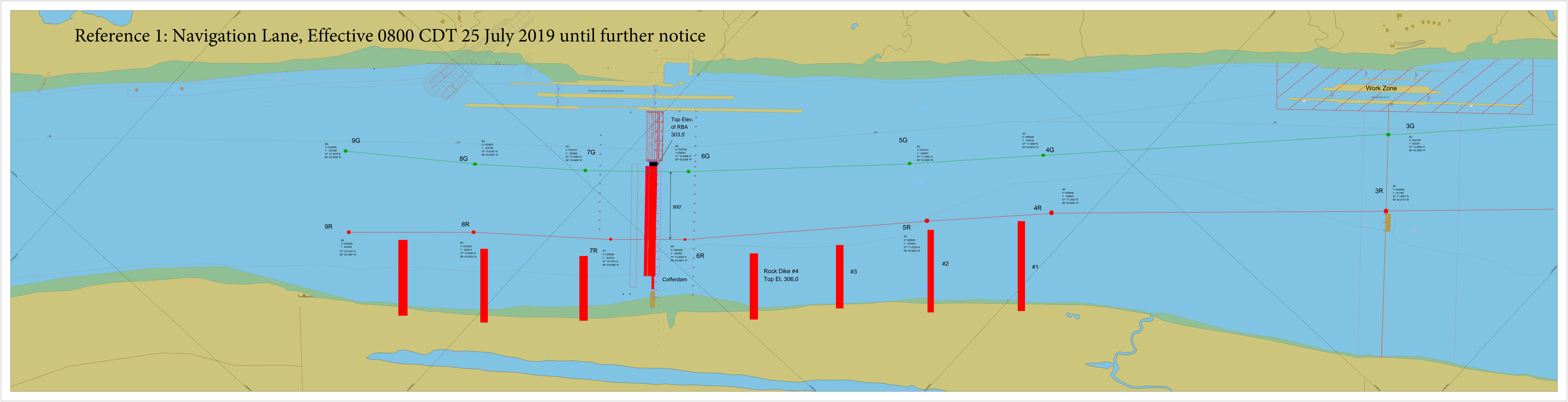
Effective 0800 CDT, 25 July 2019 until further notice, the navigation lane at Locks and Dam 53 (Ohio River Mile 962.6) will be widened from 450 feet to 1000 feet. The red buoys will shift toward Kentucky, which is possible because Pier 1 at L&D 53 has been demolished down to Elevation 280.0 (ORD). See References 3 and 4, attached.

All mariners will take direction from the Olmsted Locks and Dam control tower. A helper boat will be assisting industry traffic through the construction area at Locks and Dam 53 and the restricted navigation pass at Olmsted.

/s/

Shawn Kenney, P.E.  
Assistant Operations Manager  
Locks and Dams Project Office

# Reference 1: Navigation Lane, Effective 0800 CDT 25 July 2019 until further notice

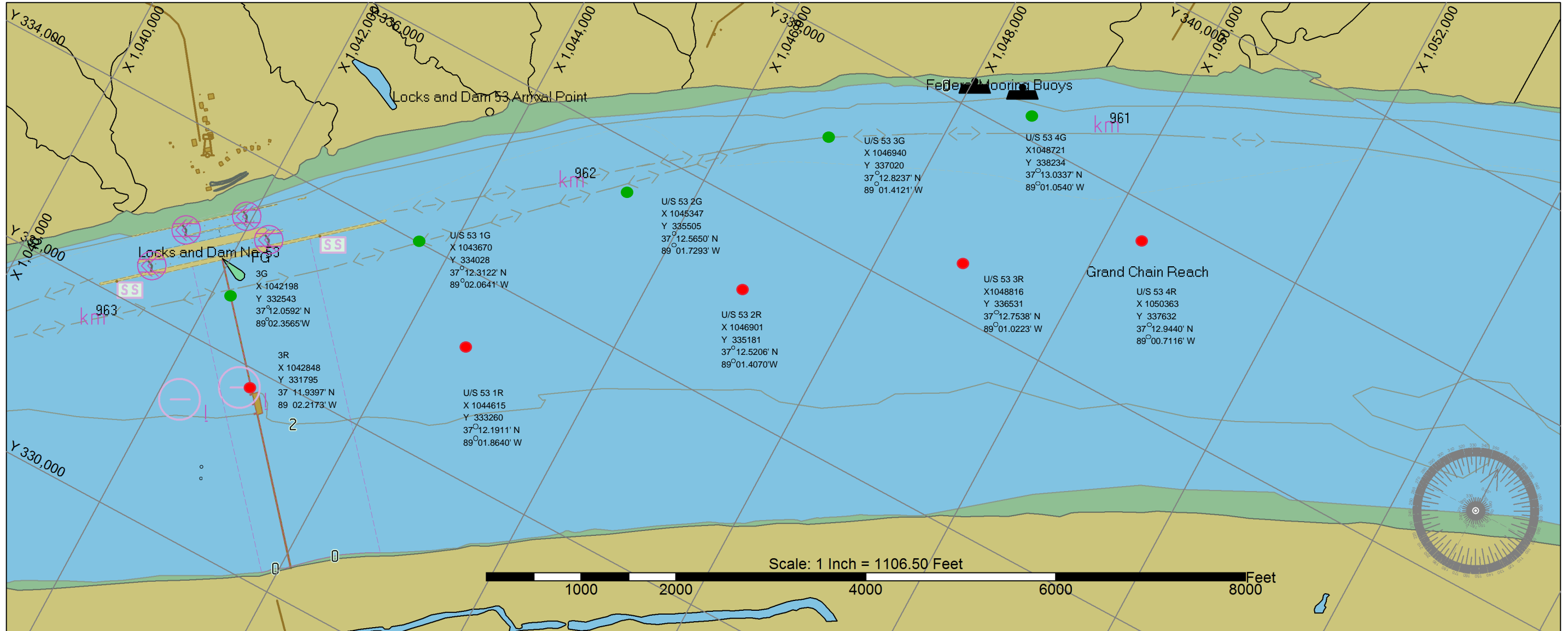


## REFERENCE 2

### Channel Fairway & Buoys ~Master ~ Work Area

<u>#</u>	<u>Type</u>	<u>General Location</u>	<u>Easting X</u>	<u>Northing Y</u>	<u>θ Latitude (GPS)</u>	<u>λ Longitude (GPS)</u>	<u>Notes</u>
3G	Green	Up-Stream	1042198	332543	37° 12.0592' N	89° 02.3565' W	In Location
4G	Green	Up-Stream	1039114	329243	37° 11.5099' N	89° 02.9818' W	In Location
5G	Green	Lower-Up-Mid-Stream	1037814	328057	37° 11.2952' N	89° 03.2268' W	In Location
6G	Green	Upper-Mid-Stream	1035785	326024	37° 10.9486' N	89° 03.6298' W	In Location
7G	Green	Lower-Mid-Stream	1034727	325089	37° 10.7885' N	89° 03.8408' W	In Location
8G	Green	Down-Stream	1033632	324190	37° 10.6342' N	89° 04.0597' W	In Location
9G	Green	Down-Stream	1032265	323166	37° 10.4576' N	89° 04.3336' W	In Location
3R	Red	Up-Stream	1042848	331795	37° 11.9397' N	89° 02.2173' W	In Location
4R	Red	Up-Stream	1039712	328750	37° 11.4322' N	89° 02.8552' W	In Location
5R	Red	Lower Up-Stream	1038500	327600	37° 11.2239' N	89° 03.0823' W	In Location
6R	Red	Upper Mid-Stream	1036399	325367	37° 10.8440' N	89° 03.4987' W	In Location
7R	Red	Lower Mid-Stream	1035696	324744	37° 10.7373' N	89° 03.6389' W	In Location
8R	Red	Down Stream	1034222	323515	37° 10.5264' N	89° 03.9333' W	In Location
9R	Red	Down Stream	1033029	322425	37° 10.3103' N	89° 04.1697' W	In Location

# Reference 3: Navigation Lane, Effective 0800 CDT 25 July 2019 until further notice





**REFERENCE 4**

**Channel Fairway & Buoys ~Master ~ Work Area**

<b><u>#</u></b>	<b><u>Type</u></b>	<b><u>General Location</u></b>	<b><u>Easting X</u></b>	<b><u>Northing Y</u></b>	<b><u><math>\theta</math> Latitude (GPS)</u></b>	<b><u><math>\lambda</math> Longitude (GPS)</u></b>	<b><u>Notes</u></b>
3G	Green	Dam 53	1042198	332543	37° 12.0592' N	89° 02.3565' W	New Location
U/S 53 1G	Green	Up-Stream 53	1043670	334028	37° 12.3122' N	89° 02.0641' W	New Location
U/S 53 2G	Green	Up-Stream 53	1045347	335505	37° 12.5650' N	89° 01.7293' W	New Location
U/S 53 3G	Green	Up-Stream 53	1046940	337020	37° 12.8237' N	89° 01.4121' W	New Location
U/S 53 4G	Green	Up-Stream 53	1048721	338234	37° 13.0337' N	89° 01.0540' W	New Location
3R	Red	Dam 53	1042848	3317953	37° 11.9397' N	89° 02.2173' W	
U/S 53 1R	Red	Up-Stream 53	1044615	333260	37° 12.1911' N	89° 01.8640' W	New Location
U/S 53 2R	Red	Up-Stream 53	1046901	335181	37° 12.5206' N	89° 01.4070' W	New Location
U/S 53 3R	Red	Up-Stream 53	1048816	336531	37° 12.7538' N	89° 01.0223' W	New Location
U/S 53 4R	Red	Up-Stream 53	1050363	337632	37° 12.9440' N	89° 00.7116' W	New Location